



| The next generation
in bulk merchandising



4eBin™

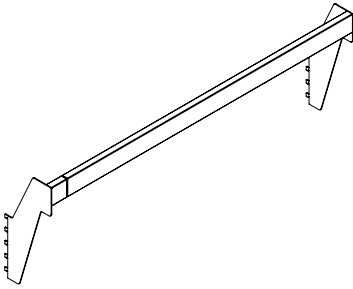
The next generation in
bulk merchandising

Mounting instructions

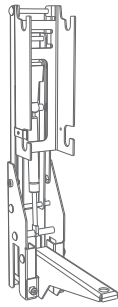
Installation

On crossbar with swing down arms:

1. Place the swing down arm on the crossbar in the desired position.
2. Turn the screw 90° in a safe mode, just to avoid the holder falling.
3. Hang the gravity bins onto the metal holder.
4. As a final step, fix the screws that lock completely the holder onto the crossbar.



X-BAR



SDA4e

Installing swing down arms is the preferred option for upper levels.

SDA has two positions: dispensing and refilling. When refilling the holder included in the SDA can be moved 90° down helping the merchandiser to refill without removing the bin from the shelf.

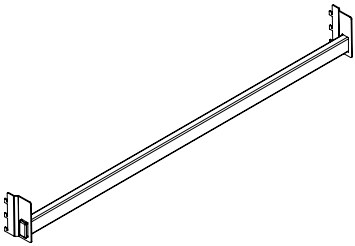


4eBin™ and 3eBin™ are fully compatible with SDA4e and SDA for 3eBin™.

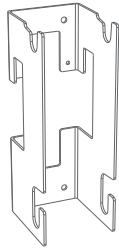


On crossbar with holder:

- Remove shelves and install the crossbars at the desired height.
- Place the metal holder on the crossbar in the desired position.
- Hang the gravity bins onto the metal holder.



FLEX-BAR



XH4e



Uses the Flex-Bar when needed to use XH4e holder.



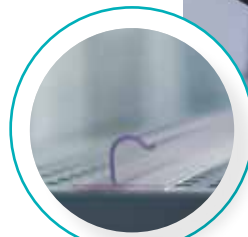
4eBin™ and 3eBin™ are fully compatible with the XH4e and previous XH for 3eBin™.



4eBin™ is installed onto a holder called XH4e.

On shelf with foot:

- Fix the profile BBR onto the shelf at the right depth (put 1 foot at each shelf end as help).
- Mount the bin to its foot.
- Angle bin slightly when inserting it into the profile. Push it into the desired position and the bin and the foot will be locked in place.



BBR



4eBin™ and 3eBin™ uses the same foot.

Remerchandising

First in, first out

- The unique angled floor of our gravity bins ensures automatic stock rotation. This safeguards product freshness and quality.
- Remerchandising is done through the top lid. The lid can be fully removed or just opened.
- Remerchandising for gravity bins is greatly facilitated by the use of swing down arms.
- Another option for remerchandising is to remove the bin from the racking and use the refilling trolley.



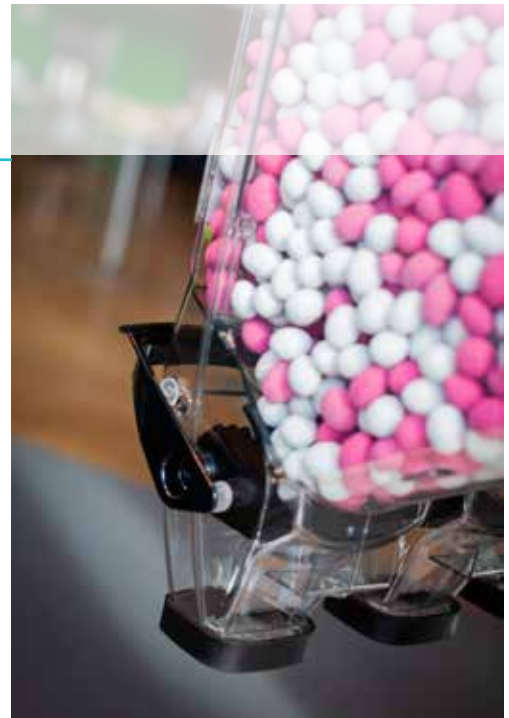
Flow control

Determine the flow of merchandise

- The opening of the shutter can be set in three (3) different positions, minimum, medium and maximum flow.
- Adjust the flow by moving the metal pin to the desired position.
- Default setting is the minimum flow.



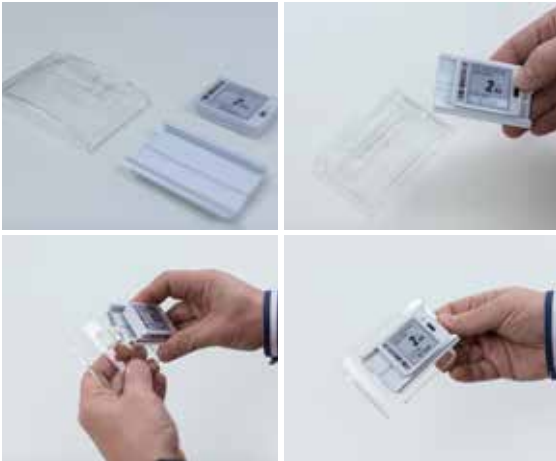
METAL PIN



Price communication

Holder for ESL

- Perfect for changing electronic prices easily.
- To fix an ESL into the holder needs a datastrip interface.



Holder for Paper Label

- It is provided by default in the bin.
- It can also be installed a second holder in the front cover.



Label holder exchangeable

- Easy-way of removing the label.
- Exist a version as a flag and another as a label holder.



Category frames, printable signs and decorative frames

- For product segmentation and category communication.

