

2023

Shelf automation

Assortment catalogue



The better shopping experience

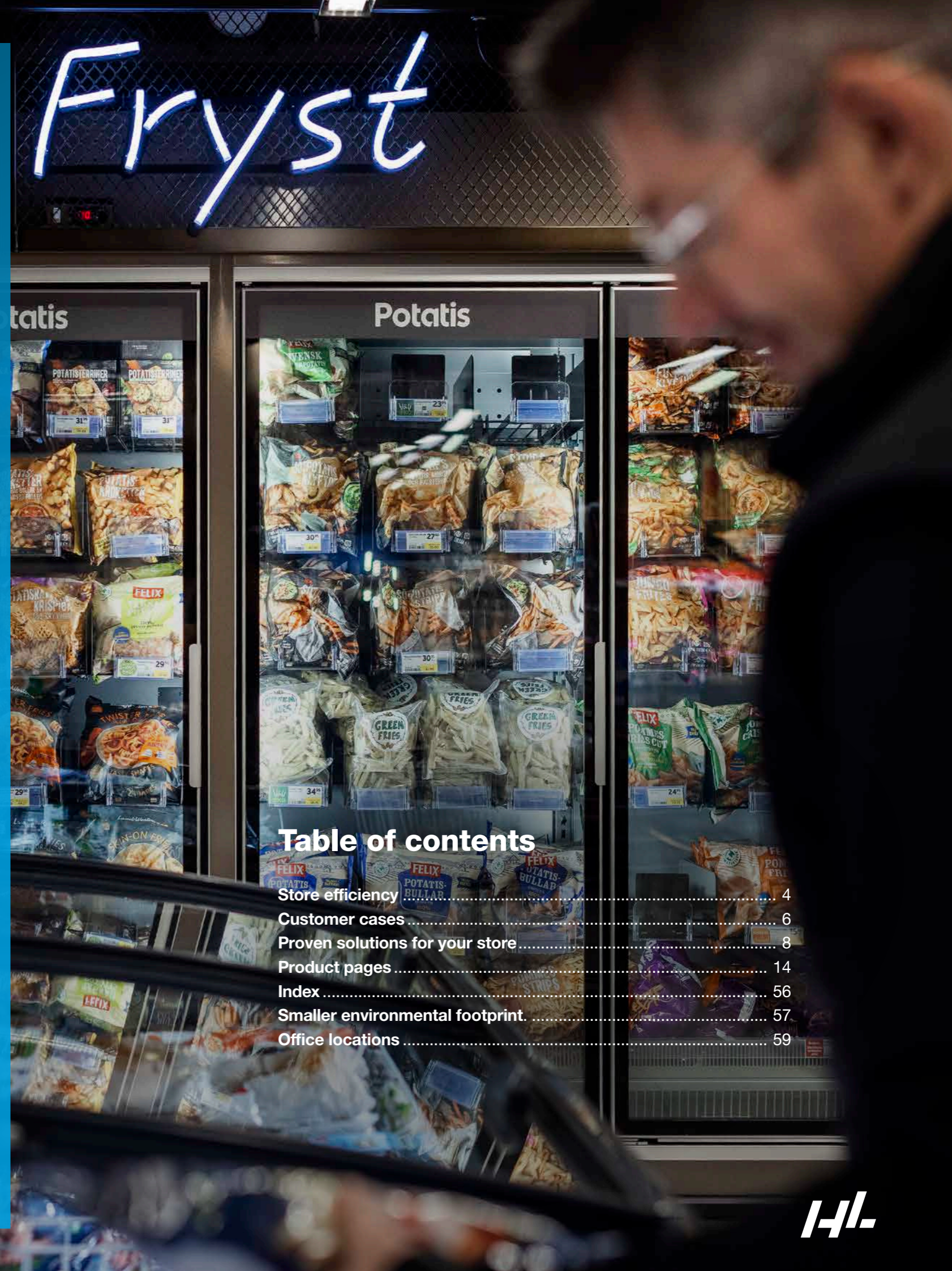
Creating stores that are **efficient to manage** and a **joy to shop at**

Today, shopper expectations are higher. They demand value, fast convenient shopping, and sustainability is quickly becoming a basic expectation. At the same time, growing online grocery sales are shrinking margins, and labour shortages and cost increases raise the pressure in the retail industry.

With our proven shelf automation solutions, retailers can save valuable labour time while driving sales, for stores that are more attractive, profitable and sustainable.

About HL

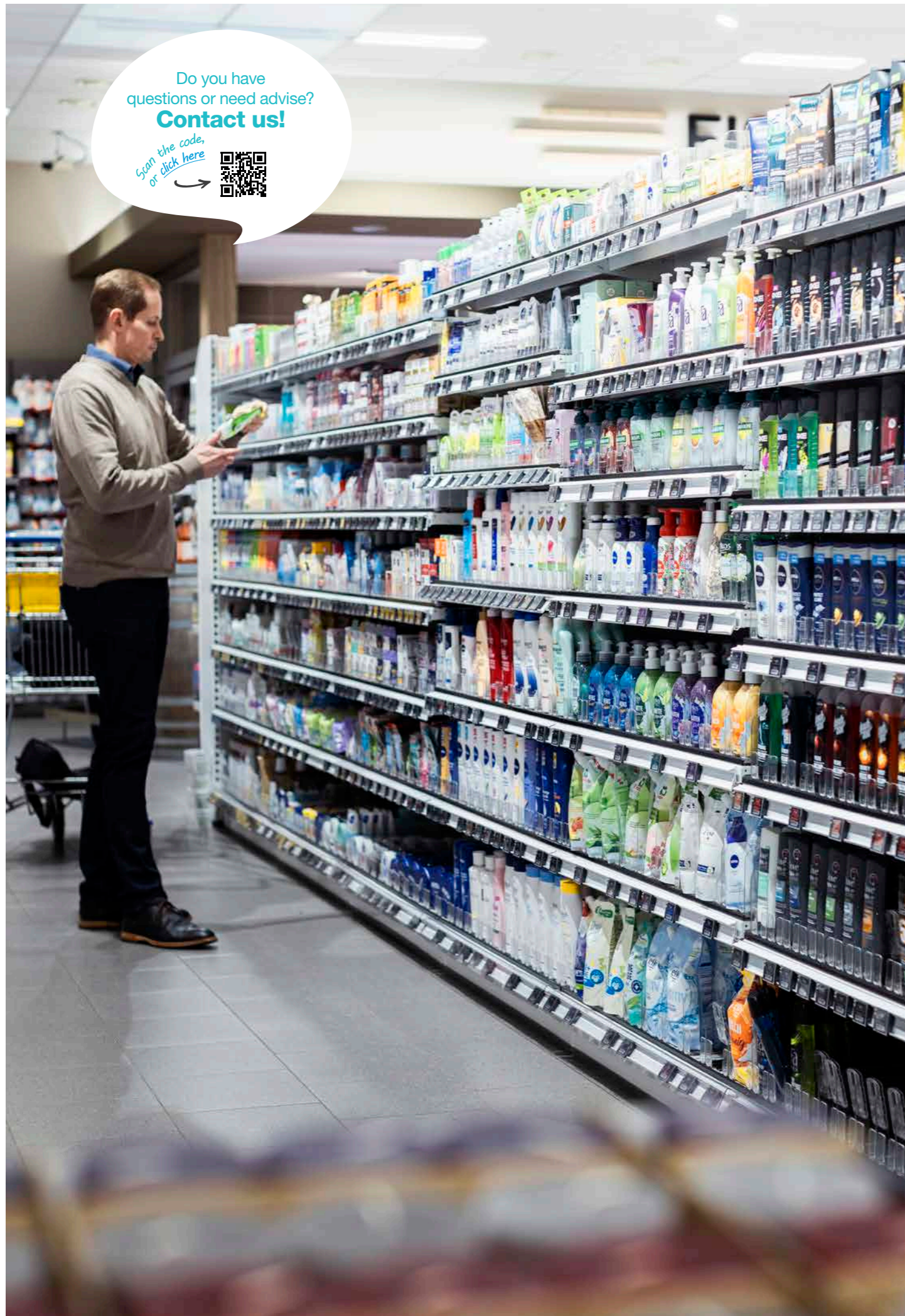
HL is an international supplier of store solutions for improved customer experience, profitability and sustainability. HL's offer includes products within store communication and merchandising solutions as well as lighting systems, secondary display and custom-made solutions and services. Our solutions are installed in 330,000 stores in more than 70 markets around the world and we are proud to be partners of the biggest retailers and brands.



Fryst

Table of contents

Store efficiency	4
Customer cases	6
Proven solutions for your store	8
Product pages	14
Index	56
Smaller environmental footprint.	57
Office locations	59



Store efficiency has never been more important

As retailers need to investment into outstanding shopping experiences, convenience, value, and sustainability to make shoppers return to their stores, store efficiency is more important than ever.

To balance growing pressure from increasing operating costs and labour shortages, shelf automation is quickly becoming critical.

Our shelf management systems simplify repetitive tasks such as fronting and aligning products, and speed up the process of restocking shelves. But not only that; when products are always perfectly

aligned at the shelf edge, out-of-stock products will be noticeable immediately, and perceived out-of-stocks on top and bottom shelves are avoided altogether.

Solutions such as Next™ have also shown to increase the number of facings on shelf, further contributing to stronger sales performance. Furthermore, since our shelf automation solutions

support the ‘first in, first out’ principle, waste can be reduced as shoppers are encouraged to choose products with the shortest shelf lives first.

Contact us for more information on how we can help you to save valuable labour time, reduce waste and drive sales - improving the bottom line.

Shelf automation is the ideal partner for check-out free stores

Proven solutions in new store formats

In a bet to deliver convenient and friction-free shopping experiences, more retailers across Europe are introducing check-out free or unmanned retail formats. Usually, these stores rely on technology such as cameras or shelf-integrated scales to register which products



Lifvs, unmaned store, Sweden

shoppers pick from shelves. But for the technology to work flawlessly, products need to be aligned and ideally, fronted throughout trading hours. Since there is limited or no store personnel available to fulfil these tasks, shelf automation systems are the perfect solution for

cashier-less stores, ensuring stock movements can be picked up, and shelves are perfectly merchandised, day in, day out, delivering a truly convenient experience for shoppers.



Sales increase
45%

Rewe Eichemeyer

Customer: REWE Eichemeyer, Germany

Solutions: Next™, Multivo™ Max

Categories: Chilled food such as cheese, chocolate, frozen food and more

Installation: 2021/2022

Results:

/ Sales increase of up to 45% for chilled foods

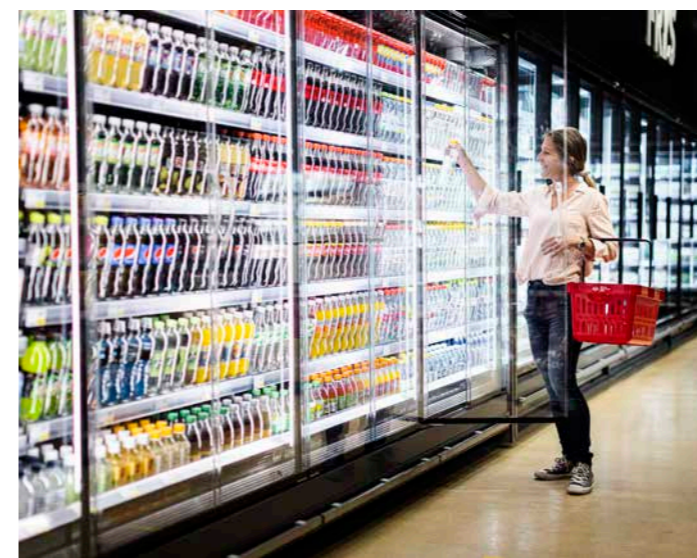
/ Up to 75% less time needed to merchandise the frozen food department

"It is a great system and will bring sales and margin."

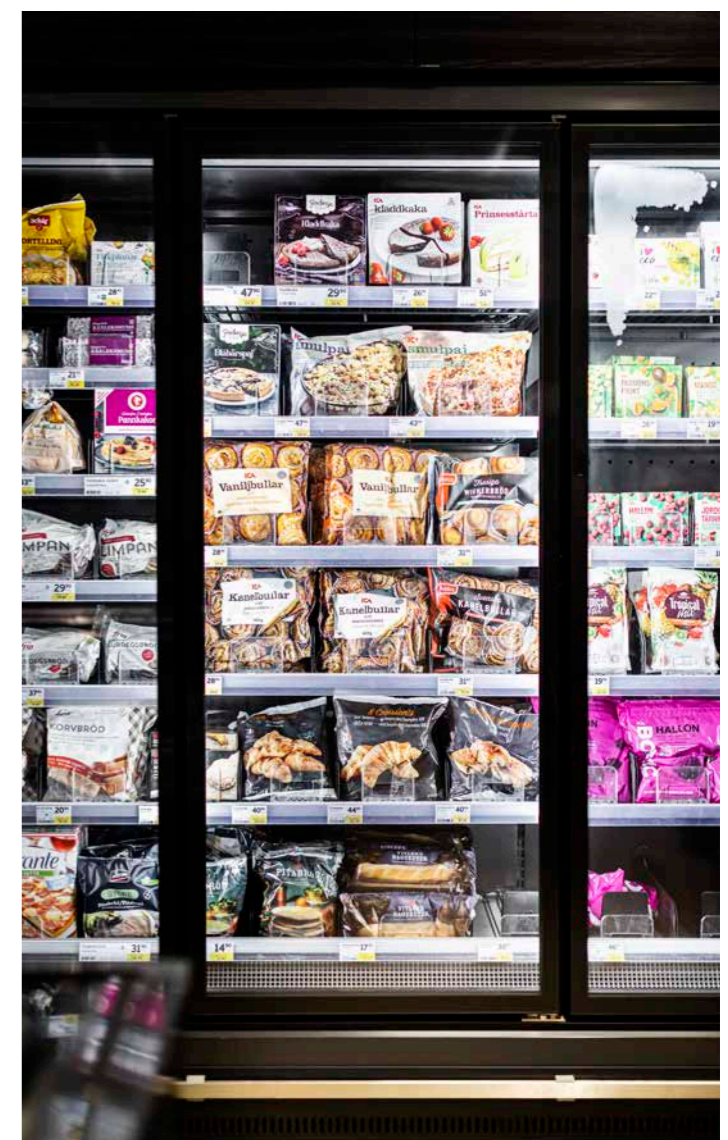
Fabian Eichemeyer, Store Owner



45min
saved every day



"Time saving is huge"



Morrisons Daily

Customer: Morrisons Daily, Mickleton UK

Solutions: Facer™, Multivo™ Max, Optimal™, Multivo™, Next™

Categories: Beverages incl. soft drinks and BWS, chilled food such as cheese, confectionery, fresh produce

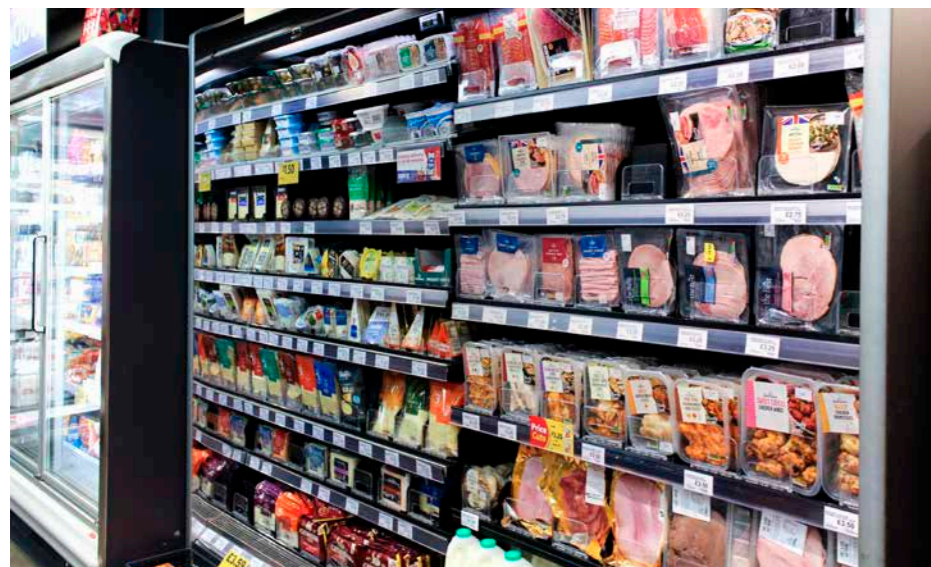
Installation: 2022

Results: Optimal™ beverage tray: +13% sales increase.

Multivo™ Max: 45 minutes saved every day.

"Working with HL Display is so easy!"

Harj Dhasee, Store Owner



Ica Supermarket

Customer: Ica Supermarkt Trollbäcken, Sweden

Solutions: Roller Track™, Multivo™ Max, Optimal™

Categories: Chilled food such as fresh pasta and fish, beverages, frozen food, dairy, fresh produce

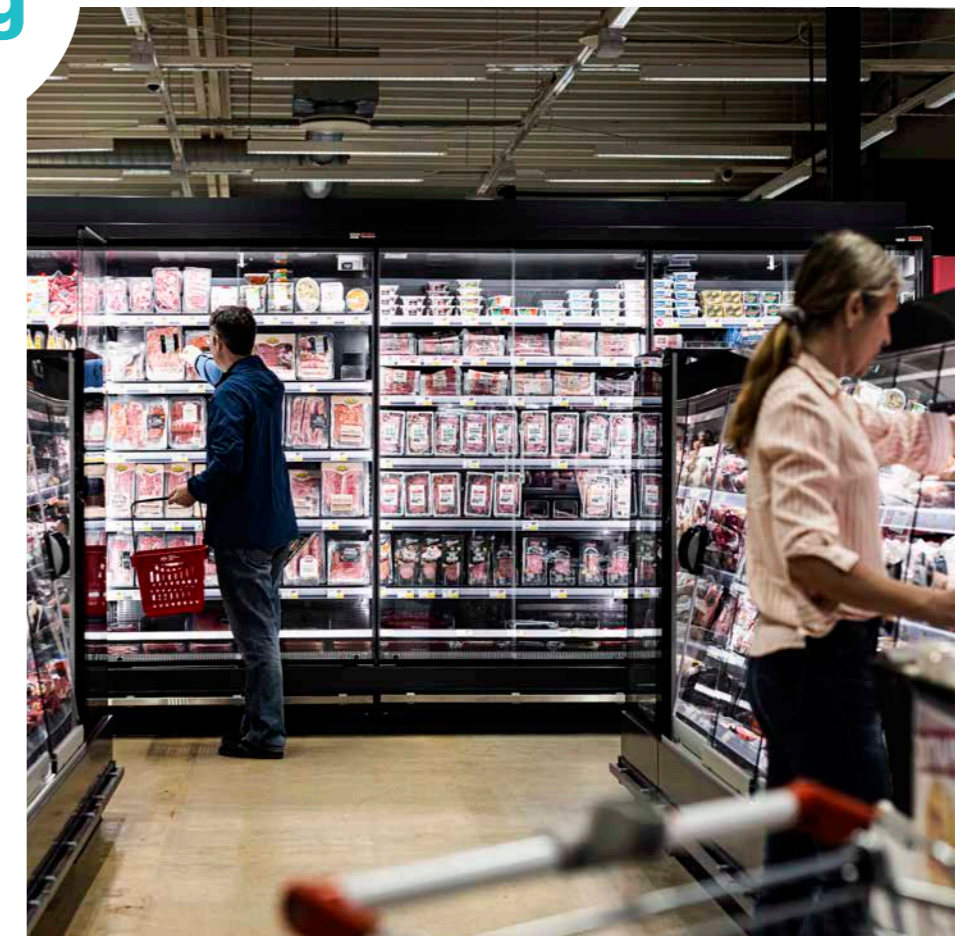
Installation: 2021

Results:

"We have better control of our products, they are front-faced and the everyday maintenance is much easier."

"Time saving is huge, though difficult to calculate but we can see personnel can spend time on other things."

Rasmus Andreasson, Store Manager



Proven solutions for your store

From chillers and freezers to confectionery and health & beauty, our proven solutions support customers around the world to minimise repetitive tasks and save labour time.

Chilled food & food-to-go

The chilled food segment is one of the fastest growing grocery segments with a wide range catering to a variety of needs, from ready meals and plant-based options to fresh meat and fish. With shelf automation, staff can complete their tasks quicker, which not only reduces labour time, but can

help to reduce energy usage as doors to chillers do not need to be open for longer than absolutely necessary. The usually shorter shelf life of chilled products means efficient stock handling including 'first in, first out' stock rotation is of outmost importance to avoid shrink and increase profit.

Our proven solutions for chilled food & food-to-go



Optimal™
Ask for black Optimal™ dividers, made from **100% recycled plastic**. For more information on Optimal™, please see page 44.



Multivo™ Max

Available as double decker for smaller containers such as cream cheese. For more information on Multivo™ Max, please see page 22.



Next™
Shown to **drive sales by up to 45%** by allowing for more facings. For more information on Next™, please see page 28.

Drive sales by up to **45%**
REWE, DE

Our proven solutions for frozen food

Saves **45min** every day
REWE, DE

Multivo™ Max
Suitable for a wide range of packaging formats and sizes

For more information on Multivo™ Max, please see page 22.



Next™

Maximising space usage even in freezers

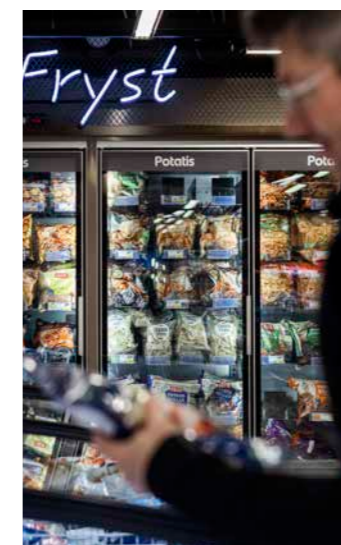
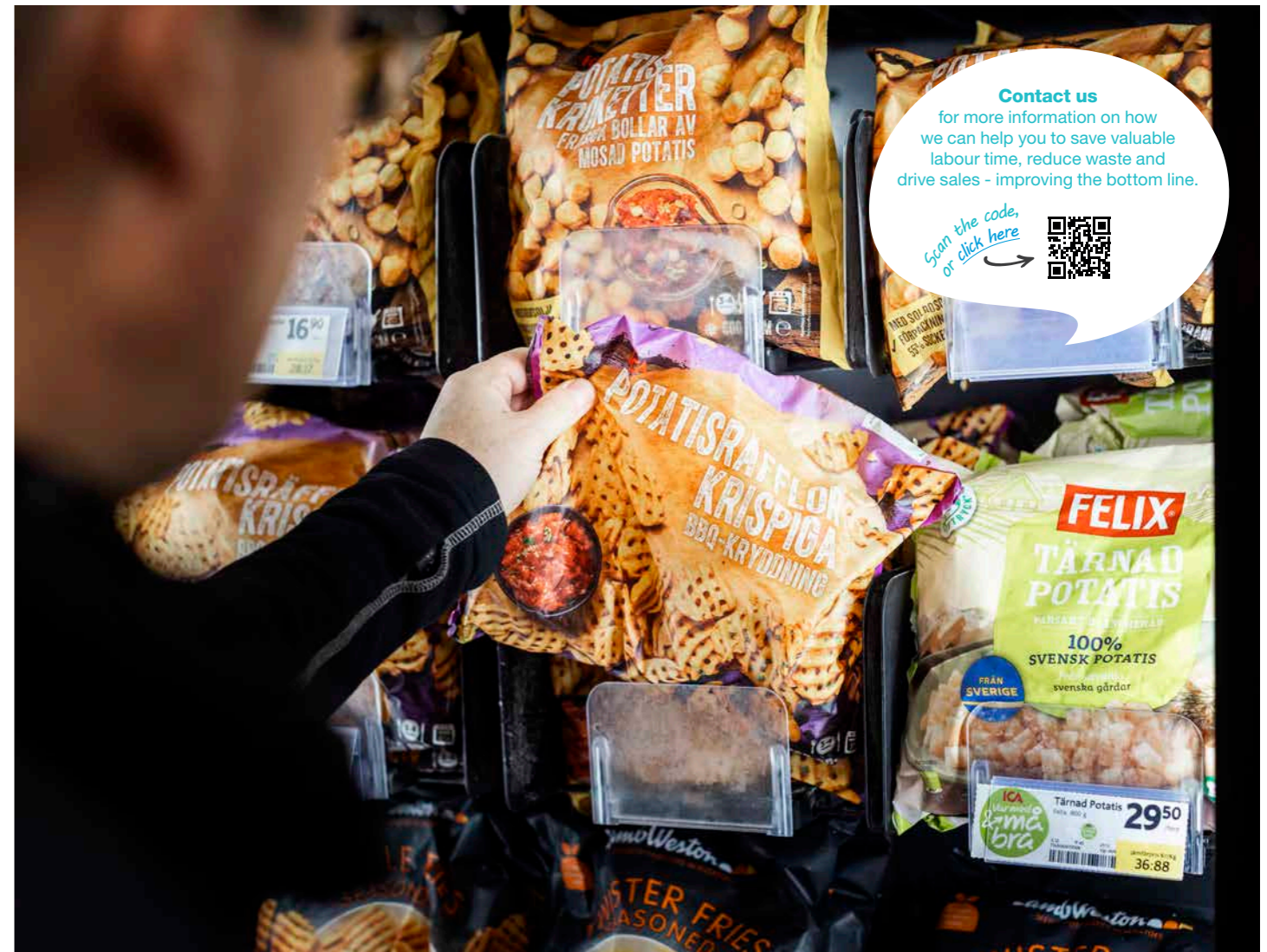
For more information on Next™, please see page 28.



Frozen food

As frozen food delivers on shoppers' need for convenience, the assortment has expanded in many stores over recent years. But merchandising a large assortment in limited freezer space can be a challenge for visibility. Efficient restocking is key to avoid open freezer doors for prolonged periods, not only

improving the merchandising experience for store personnel but also helping to reduce energy consumption. With shelf automation, merchandising can be completed quicker and products are well fronted at all times, helping shoppers to find what they are looking for.





Beverages

One of the biggest categories in store, beverages are an important driver of footfall, especially for convenience stores. Consisting of several sub-segments such as soft drinks, chilled to-go products and beer, wines and spirits, the category is driven by innovation and an interest for more sustainable packaging formats.

Efficient merchandising is essential in the beverage category

as the large number of SKUs and high turnover can be a challenge for efficiency. Shelf automation solutions speed up refilling, aligning and fronting products, helping to keep shelves neatly merchandised throughout trading hours, while spending less time on doing so. Solutions supporting the 'first in, first out' principle reduce the risk of shrinkage for products with short shelf lives such as smoothies, and chilled drinks are available for shoppers to pick-up at all hours.

Our proven solutions for confectionery

Multivo™ Max

The narrow Multivo™ Max pusher is ideal for chocolate
For more information on Multivo™ Max, please see page 22.



Chocolate trays

Add shelf liners for shopper messaging
For more information on Chocolate trays, please see page 51.



Increased sales by up to **11%**

Nisa, UK

Next™

Create a wall of products for maximizing space usage and attention
For more information on Next™, please see page 28.

Are you a brand supplier?

Many of our shelf automation solutions can be combined with branded messages, helping your brand to grab shoppers' attention and securing your shelf space, such as Modulo, a highly flexi-

ble pusher tray system for brands. Our in-house design team is here to help find the solution that is right for you, from standard systems to fully custom-made display.



Our proven solutions for beverages

Optimal™ beverage trays
Available for different packaging formats, from sleek cans to 1,5 litre PET bottles.
For more information on Optimal™ beverage trays, please see page 44.



"We save an incredible amount of time"

Ica, SE

Roller Track™

Works for angled shelves, with pushers or angle providers
For more information on Roller Track™, please see page 34.



Facer™

Speeding up merchandising by keeping products aligned and easy to front-face
For more information on Facer™, please see page 42.

"They are brilliant. It's easier to count and face"

Tesco, UK

Modulo

Flexible and adaptable front-facing for brands
For more information on Modulo, please see page 54.

Confectionery

Highly impulse driven with seasonal variation and high innovation frequency, the confectionery category offers vast opportunities for incremental sales. However, the large number of SKUs and packaging formats as well as the high shopping frequency mean on-shelf

merchandising is highly complex. Shelf automation does not only simplify the task of merchandising, but also ensures high visibility, supporting impulse sales.

Contact us!

We are glad to answer your questions or provide you with a quote.

Scan the code, or click here



Health & beauty

Health & beauty is largely driven by trends and innovation. Given the large and constantly changing assortment, keeping the variety of packaging shapes and sizes neatly merchandised without increasing labour time is a priority.

Shoppers spend more time browsing the category, look-

ing for news or to replenish their favourite products. Therefore, visibility and immediate product availability is an important advantage of physical stores over competition online.



Both solutions are part of the HL Sustainable Choice range

Our proven solutions for health & beauty



Optimal™
More than 250 million dividers sold
For more information on Optimal™, please see page 44.



Multivo™
Saving time with quicker refilling, front-facing and planogram changes
For more information on Multivo™, please see page 16.

Increased sales by up to **14%**
Edeka, DE



Modulo
Flexible and adaptable front-facing for brands
For more information on Modulo, please see page 58.



Saving time with automated price updates

ESLs automating pricing updates are becoming more popular across Europe. Therefore, solutions to securely fix them on shelves are gaining importance too. Our wide range of ESL attachment solutions fits most shelving systems on the market.

Visit our web catalogue for more information



Contact us!

We are glad to answer your questions or provide you with a quote.

Scan the code,
or click here



Find the **right shelf automation solution** for your store!

Depending on your specific objectives, we offer a range of proven solutions that save labour time and drive sales.

Looking to create a stand-alone display or combine shelf automation with shopper messaging? Our in-house design team has innovative ideas to create solutions custom-made for your needs.

Product pages content

Automated fronting.....	16
Multivo™	16
Multivo™ Accessories.....	21
Multivo™ Max.....	22
Multivo™ Max Parts and Accessories.....	24
Multivo™ Max Rails.....	26
Next™	28
Next™ Accessories.....	30
Roller Track™	34
GlideTrack™	37
TurnLoader™ & RotoShelf™	38
Automated fronting.....	42
Facer™	42
Shelf dividers.....	44
Optimal™	44
Optimal™ Dividers.....	46
Optimal™ Rails.....	47
Optimal™ Front Risers.....	48
Optimal™ Pushers.....	50
Optimal™ Trays and Boxes.....	50
Optimal™ Back Support.....	52
Optimal™ Accessories.....	53
Shelf Trays.....	56
Choco trays.....	56
Modulo.....	57





Multivo™

Simplify daily maintenance and planogram changes

Multivo™ is a shelf merchandising system that makes the daily work of refills, front-facing and planogram changes easier and faster than ever. By including push & pull feeding into one system more facings can be fronted automatically, especially in complex categories such as health & beauty.

With automated fronting, product visibility is improved, and the flip-down front facilitates fast refilling. Shelves always look attractive and well-stocked without spending too much time on maintenance.

Key benefits:

- / Save time on shelf maintenance with automated front-facing and faster refilling
- / Always attractive shelves increase product visibility
- / Easier and faster fixture changes

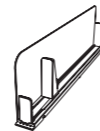


Multivo™



L-divider with 25mm pusher, left
For left side of shelf, L pointing right. With flip down front, which facilitates fast refilling. Pusher width 25 mm.

Std Colour: Transparent
Std Width: 30 mm
Std Depth: 260; 285; 335; 385; 435; 485; 510; 535; 585 mm
Std Height: 110 mm
Std. Spring: 3; 6; 9
Std Matr: Recycled PET

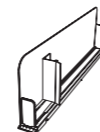


Item	Colour	W	D	H	Spring	Front	Pusher	No/unit
536000	Transp	25	285	110	6	FDf	P25	28
536001	Transp	25	335	110	6	FDf	P25	22
536002	Transp	25	385	110	6	FDf	P25	22
536004	Transp	25	485	110	6	FDf	P25	22



L-divider with 25mm pusher, left, with extension plate
For left side of shelf, L pointing right. With flip down front, which facilitates fast refilling. Pusher width 25 mm. With extension plate for round products.

Std Colour: Transparent
Std Width: 30 mm
Std Depth: 260; 285; 335; 385; 435; 485; 510; 535; 585 mm
Std Height: 110 mm
Std. Spring: 3; 6
Std Matr: Recycled PET



Item	Colour	W	D	H	Spring	Front	Pusher	No/unit
536018	Transp	25	285	110	6	FDf	P25ext	28
536019	Transp	25	335	110	6	FDf	P25ext	22
536021	Transp	25	435	110	6	FDf	P25ext	22
536022	Transp	25	485	110	6	FDf	P25ext	22

Multivo™



L-divider with 50mm pusher, left
For left side of shelf, L pointing right. With flip down front, which facilitates fast refilling. Pusher width 50 mm.

Std Colour: Transparent
Std Width: 30 mm
Std Depth: 260; 285; 335; 385; 435; 485; 510; 535; 585 mm
Std Height: 110 mm
Std. Spring: 3; 6; 9
Std Matr: Recycled PET



Item	Colour	W	D	H	Spring	Front	Pusher	No/unit
536042	Transp	50	385	110	6	FDf	P50	22
536045	Transp	50	485	110	6	FDf	P50	22
536051	Transp	50	360	110	9	FDf	P50	22
536052	Transp	50	385	110	9	FDf	P50	22



L-divider, right
For right side of shelf, L pointing left. With flip down front, which facilitates fast refilling.

Std Colour: Transparent
Std Width: 30 mm
Std Depth: 260; 285; 335; 385; 435; 485; 510; 535; 585 mm
Std Height: 110 mm
Std Matr: Recycled PET



Item	Colour	W	D	H	Front	No/unit
536079	Transp	30	360	110	FDf	22
536080	Transp	30	385	110	FDf	22
536082	Transp	30	460	110	FDf	22
536083	Transp	30	485	110	FDf	22



L-divider with 25mm pusher, right
For right side of shelf, L pointing left. With flip down front, which facilitates fast refilling. Pusher width 25 mm.

Std Colour: Transparent
Std Width: 30 mm
Std Depth: 260; 285; 335; 385; 435; 485; 510; 535; 585 mm
Std Height: 110 mm
Std. Spring: 3; 6
Std Matr: Recycled PET

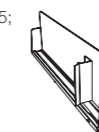


Item	Colour	W	D	H	Spring	Front	Pusher	No/unit
536098	Transp	25	285	110	6	FDf	P25	28
536100	Transp	25	385	110	6	FDf	P25	22
536102	Transp	25	485	110	6	FDf	P25	22
536105	Transp	25	585	110	6	FDf	P25	22



L-divider with 25mm pusher, right, with extension plate
For right side of shelf, L pointing left. With flip down front, which facilitates fast refilling. Pusher width 25 mm. With extension plate for round products.

Std Colour: Transparent
Std Width: 30 mm
Std Depth: 260; 285; 335; 385; 435; 485; 510; 535; 585 mm
Std Height: 110 mm
Std. Spring: 3; 6
Std Matr: Recycled PET

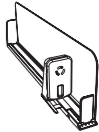


Item	Colour	W	D	H	Spring	Front	Pusher	No/unit
536116	Transp	25	285	110	6	FDf	P25ext	28
536118	Transp	25	385	110	6	FDf	P25ext	22
536120	Transp	25	485	110	6	FDf	P25ext	22



L-divider with 50mm pusher, right
For right side of shelf, L pointing left. With flip down front, which facilitates fast refilling. Pusher width 50 mm.

Std Colour: Transparent
Std Width: 30 mm
Std Depth: 260; 285; 335; 385; 435; 485; 510; 535; 585 mm
Std Height: 110 mm
Std. Spring: 3; 6
Std Matr: Recycled PET

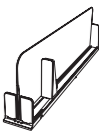


Item	Colour	W	D	H	Spring	Front	Pusher	No/unit
536135	Transp	50	335	110	6	FDf	P50	22
536136	Transp	50	385	110	6	FDf	P50	22
536138	Transp	50	485	110	6	FDf	P50	22
536141	Transp	50	585	110	6	FDf	P50	22



T-divider with 25mm pusher, right
With flip down front, which facilitates fast refilling. Pusher width 25mm, mounted right.

Std Colour: Transparent
Std Width: 25 mm
Std Depth: 260; 285; 335; 385; 435; 485; 510; 535; 585 mm
Std Height: 110 mm
Std. Spring: 3; 6; 9
Std Matr: Recycled PET

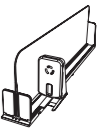


Item	Colour	W	D	H	Spring	Front	Pusher	No/unit
551898	Transp	25	335	110	6	FDf	P25	20
573966	Transp	25	485	110	6	FDf	P25	14



T-divider with 50mm pusher, right
With flip-down front, which facilitates fast refilling. Pusher width 50mm, mounted right.

Std Colour: Transparent
Std Width: 50 mm
Std Depth: 260; 285; 335; 385; 435; 485; 510; 535; 585 mm
Std Height: 110 mm
Std. Spring: 3; 6; 9
Std Matr: Recycled PET



Item	Colour	W	D	H	Spring	Front	Pusher	No/unit
535373	Transp	50	485	110	6	FDf	P50	14
535382	Transp	50	385	110	9	FDf	P50	20
535385	Transp	50	485	110	9	FDf	P50	14
535383	Transp	50	435	110	9	FDf	P50	14



T-divider with 30mm pull-strip, right
With flip down front, which facilitates fast refilling. Pull-strip back-plate width 30 mm, mounted right.

Std Colour: Transparent
Std Width: 50 mm
Std Depth: 260; 285; 335; 385; 435; 485; 510; 535; 585 mm
Std Height: 110 mm
Std Matr: Recycled PET



Item	Colour	W	D	H	Front	Pusher	No/unit
577132	Transp	30	485	110	FDf	PS30	14

Multivo™



Slow motion pusher

Compatible with Multivo™ front rail . Breakable every 25 mm. This pusher type allows better space optimization, as well as shrinkage reduction. Width track 43mm, total width 48mm.

Std Colour: Grey and white
Std Width: 48 mm
Std Depth: 285-485 mm
Std Height: 75 mm
Std. Spring: 6N; 9N; 10N; 12N



SMP40B-MU

Item	Colour	W	D	Spring	No/unit
813064	Grey S8	48	485	6	25

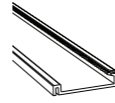
Multivo™ Rails



Front rail for non-wire shelves

Used to mount Multivo™ and Multivo™ Max on non-wire shelves. Available with different types of mounting tape, depending on the environment and shelf requirements.

Std Colour: Transparent, white, black, grey S24
Std Depth: 42 mm
Std Matr: PVC



MU-RAIL

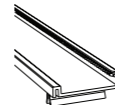
Item	Colour	W	D	Mount	Tape	No/unit
732228	Grey S24	895	42	Magnet tape	TTMR19	25
730779	Black	995	42	Magnet tape	TTMR19	25
729550	Black	1000	42	Magnet tape	TTMR19	25
730484	Black	1245	42	Magnet tape	TTMR19	25
731556	Black	1328	42	Tape	TTP19	75



Front rail for wire shelves

Used to mount Multivo™ and Multivo™ Max on wire shelves. Fits wire shelves with wire diameter 2.8-3.0 mm. Clips not mounted. The amount of clips depend on the length of the rail.

Std Colour: Transparent, white, black, grey S24
Std Depth: 42 mm
Std Mount: Clips
Std Matr: PVC



MU-RAIL3.0

Item	Colour	W	D	Ø	en_Mount	Tape	No/unit
730550	Black	1000	42	3.0	Clips,Tape	TTP19	75
730551	Black	1245	42	3.0	Clips,Tape	TTP19	75



Front rail, aluminium

Used to mount Multivo™ Max. Offers a more robust solution when used with our shelf-specific clips.

Std Matr: Aluminium



MU-RAIL ALU

Item	Colour	W	D	No/unit
463428	Alu	740	42	10



Segmentation front rail

Used to mount Multivo™ and Multivo™ Max on non-wire shelves. Includes a front riser with 25mm label pocket that can be used for branding and segmentation.

Std Colour: Black
Std Label H: 25 mm



MU-FRAIL

Item	Colour	W	Mount	Tape	No/unit
461313	Black	665	Magnet tape	TTMR18	50
735352	White	895	Foam tape	TTF12	50
734693	Black	1328	Magnet tape	TTMR18	50
734605	Black	1330	Foam tape	TTF12	50

Multivo™ Accessories



Slope for puck-shaped products

Slope to fit in the MU-RAIL to prevent "puck shaped" and similar/narrow products to get stuck behind the rail. Use pusher dividers and MU-SLOPE fitted into MU-RAIL for best result.

Std Colour: Black
Std Height: 25 mm

MU-SLOPE

Item	Colour	No/unit
734454	Black	50



Pusher extension plate

Extruded extension plate for round products that fits the 25mm wide pusher.



MU-P25EXT

Item	No/unit
	On offer, contact customer service



Glide support

To be used as a center line support. Used when products have a base narrower than their max width. To be mounted onto the Multivo™ front rail.

Std Colour: Transparent
Std Width: 25 mm
Std Depth: 285; 385; 485 mm
Std Matr: PVC



MU-GLIDE

Item	Colour	D	No/unit
736783	Transp	289	65
736781	Transp	389	65
736782	Transp	489	65



Multivo™ Max is a highly flexible wire metal pusher tray which keeps shelves perfectly merchandised. It provides operational benefits as less time is needed to keep the shelf neatly organised and front-faced, even on top and bottom shelves to avoid products are perceived to be out-of-stock and sales are lost.

Multivo™ Max is also suitable for chillers and freezers, and since the tray is compatible with the Multivo™ rail, it is easily installed on shelf. Dividers can be adjusted, which makes Multivo™ Max easily adaptable to different packaging types and sizes. Complementing the Multivo™ Max range is the double-decker that is a two-tiered rack ideal for smaller containers such as sauces and cream cheese.

Key benefits:

- / Automated front-facing for more efficient shelf management
- / Suitable for a variety of packaging formats and sizes
- / Easy to install and maintain

Multivo™ Max

The low maintenance pusher system when extra strength is needed

Multivo™ Max



Metal tray with pusher
Extendable between widths 110mm and 250mm. Used primary for chilled or frozen foods on shelves. The tray is compatible with Multivo™ rail which is easily installed on shelf. The rail is mounted in the front or the back of the shelf and planogram changes can be easily done.

Std Colour: Black
Std Width: 110-250 mm
Std Depth: 295; 395; 440; 465; 495; 565; 595 mm
Std Front: A6; S8; F14
Std. Spring: 8N; 12N; 16N; 20N
Std Matr: Metal



MU-MAX2-2M-P100

Item	Colour	W	D	Spring	Front	Pusher	No/unit
571188	Black	110-250	395	2x12N	A6	P100	12
571212	Black	110-250	495	2x12N	A6	P100	12
571595	Black	110-250	495	2x12N	S8	P100	12
571264	Black	110-250	565	2x16N	S8	P100	12



Metal tray with pusher, narrow
Extendable between widths 65mm and 120mm. The tray is compatible with Multivo™ rail which is easily installed on shelf. The rail is mounted in the front or the back of the shelf and planogram changes can be easily done.

Std Colour: Black
Std Width: 65-120 mm
Std Depth: 295; 395; 495 mm
Std Front: A4; S6; F7; FDF4
Std. Spring: 8N; 12N; 16N
Std Matr: Metal



MU-MAX2-2M-P50

Item	Colour	W	D	Spring	Front	Pusher	No/unit
586326	Black	65-120	295	2x12N	A4	P50	26
586329	Black	65-120	395	2x12N	A4	P50	26
586333	Black	65-120	495	2x12N	A4	P50	24
161057	Black	65-120	495	2x8N	S6	P50	24
161058	Black	65-120	495	2x12N	S6	P50	24



Metal tray with pizza wire divider
Used for fresh, round pizza. Extendable between widths 270 mm and 410 mm. The tray is compatible with Multivo™ rail which is easily installed on shelf. The rail is mounted in the front or the back of the shelf and planogram changes can be easily done.

Std Width: 270-410 mm
Std Depth: 395; 495 mm
Std Front: F14

MU-MAX2-2P-P100

Item	Colour	W	D	Spring	Front	Pusher	No/unit
194450	Black	270-410	395	2x16N	F14	P100	12
194451	Black	270-410	495	2x16N	F14	P100	6

On offer, contact customer service							
------------------------------------	--	--	--	--	--	--	--

On offer, contact customer service							
------------------------------------	--	--	--	--	--	--	--

Multivo™ Max



Metal tray with higher wire divider
Metal tray with a higher wire divider (110 mm) than the standard wire divider (70 mm). Extendable between widths 110mm and 250mm or 210mm and 355mm. The tray is compatible with Multivo™ rail which is easily installed on shelf. The rail is mounted in the front or the back of the shelf and planogram changes can be easily done.

Std Width: 110-250; 210-355 mm
Std Depth: 395; 440; 495; 565 mm
Std Height: 110 mm
Std Front: A6; S8; F14; FDW4

MU-MAX2-2WH-P100

On offer, contact customer service							
------------------------------------	--	--	--	--	--	--	--



Wire tray with pusher, narrow
Extendable between widths 65mm and 120mm. The tray is compatible with Multivo™ rail which is easily installed on shelf. The rail is mounted in the front or the back of the shelf and planogram changes can be easily done.

Std Colour: Black
Std Width: 65-120 mm
Std Depth: 295; 395; 495 mm
Std Front: A4; S6; F7; FDF4
Std. Spring: 8N; 12N; 16N
Std Matr: Wire



MU-MAX2-2W-P50

Item	Colour	W	D	Spring	Front	Pusher	No/unit
586335	Black	65-120	295	2x8N	A4	P50	26
582380	Black	65-120	395	2x12N	F7	P50	26
582886	Black	65-120	395	2x16N	F7	P50	26
585188	Black	65-120	495	2x16N	F7	P50	24
582381	Black	65-120	495	2x12N	F7	P50	24



Wire tray with pusher
Extendable between widths 110mm and 250mm or 210mm and 355mm. Used primary for chilled or frozen foods on shelves. The tray is compatible with Multivo™ rail which is easily installed on shelf. The rail is mounted in the front or the back of the shelf and planogram changes can be easily done.

Std Colour: Black
Std Depth: 295; 395; 440; 465; 495; 565; 595 mm
Std Width: 110-250; 210-355 mm
Std Front: A6; S8; F14
Std. Spring: 8N; 12N; 16N; 20N
Std Matr: Wire



MU-MAX2-2W-P100

Item	Colour	W	D	Spring	Front	Pusher	No/unit
192491	Black	210-355	295	2x6L	FDW4	P100	8
193719	Black	210-355	395	2x6L	FDW4	P100	6
193720	Black	210-355	495	2x6L	FDW4	P100	6



Metal L-tray with pusher
Extendable between widths 65mm and 120mm. The tray is compatible with Multivo™ rail which is easily installed on shelf. The rail is mounted in the front or the back of the shelf and planogram changes can be easily done.

Std Colour: Black
Std Width: 65-120 mm
Std Depth: 295; 395; 495 mm
Std Front: A4; S6; F7; FDF4
Std. Spring: 8N; 12N; 16N



MU-MAX2-1M-P50

Item	Colour	W	D	Spring	Front	Pusher	No/unit
590387	Black	65-120	495	2x12N	F7	P50	24

On offer, contact customer service							
------------------------------------	--	--	--	--	--	--	--

On offer, contact customer service							
------------------------------------	--	--	--	--	--	--	--



Metal L-tray with pusher
Extendable between widths 110mm and 250mm. Used primary for chilled or frozen foods on shelves. The tray is compatible with Multivo™ rail which is easily installed on shelf. The rail is mounted in the front or the back of the shelf and planogram changes can be easily done.

Std Colour: Black
Std Width: 110-250 mm
Std Depth: 295; 395; 440; 495; 565; 595 mm
Std Front: A6; S8; F14
Std. Spring: 8N; 12N; 16N; 20N
Std Matr: Metal



MU-MAX2-1M-P100

Item	Colour	W	D	Spring	Front	Pusher	No/unit
588540	Black	110-250	395	2x8N	A6	P100	12
571189	Black	110-250	395	2x12N	A6	P100	12
584232	Black	110-250	440	2x16N	A6	P100	12
571309	Black	110-250	495	2x16N	A6	P100	12
584227	Black	110-250	495	2x16N	S8	P100	12



Metal L-divider with pusher
Extendable between widths 110mm and 250mm. Used primary for chilled or frozen foods on shelves. The tray is compatible with Multivo™ rail which is easily installed on shelf. The rail is mounted in the front or the back of the shelf and planogram changes can be easily done.

Std Colour: Black
Std Depth: 295; 395; 440; 495; 565; 595 mm
Std Width: 110-250 mm
Std Front: A6; S8; F14; FDW4
Std. Spring: 8N; 12N; 16N; 20N
Std Matr: Wire



MU-MAX2-1W-P100

Item	Colour	W	D	Spring	Front	Pusher	No/unit
571183	Black	110-250	395	2x12N	S8	P100	12
571231	Black	110-250	395	2x16N	S8	P100	12
589537	Black	110-250	595	8N	S8	P100	10



Wire L-tray with pusher
Fixed L-divider. The tray is compatible with Multivo™ rail which is easily installed on shelf. The rail is mounted in the front or the back of the shelf and planogram changes can be easily done.

Std Colour: Black
Std Width: 70 mm
Std Depth: 295; 395; 495 mm
Std Front: A4; S6; F7; FDF4
Std. Spring: 8N; 12N; 16N
Std Matr: Wire



MU-MAX2-LL-1W-P50

Item	Colour	W	D	Spring	Front	Pusher	No/unit
586350	Black	70	395	2x12N	A4	P50	22
586354	Black	70	495	2x12N	A4	P50	20



Wire pusher tray, double decker
Double deck wire tray in width 100mm or 125mm, 110mm between levels. Used primary for smaller containers and vacuum pack, such as cream cheese and Halloumi. To be used with the Multivo™ rail mounted on the front or the back of the shelf.

Std Colour: Black
Std Width: 100; 125 mm
Std Depth: 395 mm
Std Front: FDF; S6; A4; F7
Std Matr: Wire

MU-MAX2-WDD

On offer, contact customer service							
------------------------------------	--	--	--	--	--	--	--

On offer, contact customer service							
------------------------------------	--	--	--	--	--	--	--

Multivo™ Max Parts and Accessories



Front stop, angled (A6)
Recommended for vacuum and skin packs.

Std Colour: Transparent
Std Width: 110 mm
Std Height: 55 mm
Std Matr: Polycarbonate



MU-MAX2 FRONT ANGLED (A6)

Item	Colour	No/unit
813669	Transp	2



Front stop, straight (S8)
Recommended for boxes and bagged products.
The "handle" makes loading outside shelf easier.

Std Colour: Transparent
Std Width: 110 mm
Std Height: 70 mm
Std Matr: Polycarbonate



MU-MAX2 FRONT STRAIGHT (S8)

Item	Colour	No/unit
813670	Transp	2



Front stop, 'finger' (F14)
Recommended for tall packs.

Std Colour: Transparent
Std Width: 110 mm
Std Height: 140 mm
Std Matr: Polycarbonate



MU-MAX2 FRONT FINGER (F14)

Item	Colour	No/unit
813671	Transp	1



Front stop, angled, mini (A4)
Recommended for chocolate bars.

Std Width: 65 mm
Std Height: 40 mm



MU-MAX2 FRONT ANGLED MINI (A4)

Item	Colour	No/unit
816730	Transp	4



Front stop, flip-down (FDW4)
Compatible with Multivo™ Max P100 trays.

Std Colour: Transparent
Std Width: 110 mm
Std Height: 40 mm

MU-MAX2 FRONT FLIP (FDW4)

Item	Colour	No/unit
On offer, contact customer service		



Front stop 'finger', mini (F7)
Recommended for chocolate bars.

Std Colour: Transparent
Std Width: 65 mm
Std Height: 70 mm
Std Matr: Polycarbonate



MU-MAX2 FRONT FINGER MINI (F7)

Item	Colour	No/unit
813665	Transp	4



Front stop, straight (S6)
Recommended for cold cuts and pre-sliced cheese.

MU-MAX2 FRONT STRAIGHT (S6)

Item	Colour	No/unit
On offer, contact customer service		

Multivo™ Max Parts and Accessories



Metal sidewall for Multivo™ Max
To be used with Multivo™ Max trays.

Std Colour: Black
Std Depth: 295; 395; 440; 495; 565; 595 mm
Std Height: 50; 110 mm
Std Matr: Metal



MU-MAX METAL SIDEWALL

Item	Colour	W	D	H	Spec.	No/unit
595544	Black	65-120	295	50	20x wall +42x rubber	1
595548	Black	65-120	395	50	20x wall +42x rubber	1
595220	Black	110-250	395	110	20x wall +42x rubber	1
595536	Black	110-250	495	110	20x wall +42x rubber	1



Flip down front (FDF4)

MU-MAX2 FRONT FLIP DOWN (FDF4)

Item	Colour	No/unit
On offer, contact customer service		



Wire sidewall for Multivo™ Max
To be used with Multivo™ Max trays.

Std Colour: Black
Std Depth: 295; 395; 440; 495; 565; 595 mm
Std Height: 70 mm



MU-MAX WIRE SIDEWALL

Item	Colour	W	D	H	Spec.	No/unit
595656	Black	110-250	395	70	20x wall +42x rubber	1
595658	Black	110-250	495	70	20x wall +42x rubber	1
595659	Black	210-355	395	70	20x wall +42x rubber	1
595661	Black	210-355	495	70	20x wall +42x rubber	1



Pusher P50
For Multivo™ Max width 65-120mm. Pusher with spring support in lower part. At low pressure (i.e. few remaining products) the back support will tilt to an inclined position to improve the fronting of the last products.

Std Colour: Black
Std Width: 50 mm
Std Height: 120 mm



MU-MAX2 PUSHER P50

Item	Colour	No/unit
813663	Black	200



Pusher P100
Pusher for Multivo™ Max width 110-250mm and 210-355mm. Reversible pusher for adaptation to the front type.

Std Colour: Black
Std Width: 100 mm
Std Height: 120 mm



MU-MAX2 PUSHER P100

Item	Colour	No/unit
813930	Black	100



Rubber gasket
Rubber gaskets make the width adjustment of the dividers easier and more secure.

Std Colour: Black

MU-MAX2 RUBBER GASKET

Item	Colour	No/unit
On offer, contact customer service		

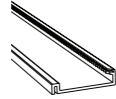
Automated fronting

Multivo™ Max Rails



Front rail for non-wire shelves
Used to mount Multivo™ and Multivo™ Max on non-wire shelves. Available with different types of mounting tape, depending on the environment and shelf requirements.

Std Colour: Transparent, white, black, grey S24
Std Depth: 42 mm
Std Matr: PVC



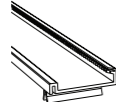
MU-RAIL

Item	Colour	W	D	Mount	Tape	No/unit
732228	Grey S24	895	42	Magnet tape	TTMR19	25
730779	Black	995	42	Magnet tape	TTMR19	25
729550	Black	1000	42	Magnet tape	TTMR19	25
730484	Black	1245	42	Magnet tape	TTMR19	25
731556	Black	1328	42	Tape	TTP19	75



Front rail for wire shelves
Used to mount Multivo™ and Multivo™ Max on wire shelves. Fits wire shelves with wire diameter 2.8-3.0 mm. Clips not mounted. The amount of clips depend on the length of the rail.

Std Colour: Transparent, white, black, grey S24
Std Depth: 42 mm
Std Mount: Clips
Std Matr: PVC



MU-RAIL3.0

Item	Colour	W	D	Ø	en_Mount	Tape	No/unit
730550	Black	1000	42	3.0	Clips,Tape	TTP19	75
730551	Black	1245	42	3.0	Clips,Tape	TTP19	75



Front rail, aluminium
Used to mount Multivo™ Max. Offers a more robust solution when used with our shelf-specific clips.

Std Matr: Aluminium



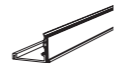
MU-RAIL ALU

Item	Colour	W	D	No/unit
463428	Alu	740	42	10



Segmentation front rail
Used to mount Multivo™ and Multivo™ Max on non-wire shelves. Includes a front riser with 25mm label pocket that can be used for branding and segmentation.

Std Colour: Black
Std Label H: 25 mm



MU-FRIL

Item	Colour	W	Mount	Tape	No/unit
461313	Black	665	Magnet tape	TTMR18	50
735352	White	895	Foam tape	TTF12	50
734693	Black	1328	Magnet tape	TTMR18	50
734605	Black	1330	Foam tape	TTF12	50



Front rail
Used to mount Multivo™ Max on non-wire shelves. No sideways locking.

Std Colour: Black
Std Mount: Magnet tape
Std Matr: PVC

MU-MAXRAIL

Item	Colour	W	Mount	Tape	No/unit
457045	Black	750	Magnet tape	TTMR	25
460048	Black	1000	Magnet tape	TTMR	25
456662	Black	1245	Magnet tape	TTMR	25
460047	Black	1250	Magnet tape	TTMR	25



Attachment clip for Multivo™ rails
Wire clip for mounting Multivo™ front rail on 3-4 mm wire shelf. Use at least three clips per shelf, mount these at approximately 15-20 cm interval.



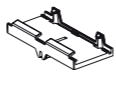
MU-CLIP

On offer, contact customer service



Attachment clip for Multivo™ Max
For mounting Multivo™ Max trays on wire shelves. Fits 3mm wire. Depth available 40mm and 47mm.

Std Colour: Transparent
Std Depth: 40-47 mm
Std Matr: Polycarbonate



MU-MAX CLIP

Item	Colour	No/unit
566780	Transp	100



Multivo™ Max



Next™

Maximise merchandising space and product visibility

Next™ is a shelf-less pusher tray system sitting on crossbars, suitable also for coolers and sub-zero environments such as freezers. Next™ has not only shown to reduce time for daily merchandising tasks such as refilling and fronting of products, but is also proven to drive sales as more facings can be fit on shelf and products are highly visible for shoppers.

Next™ pusher trays can be adjusted to size and help to optimise the retail space. Different types of dividers, fronts and accessories allow any type of merchandise to be displayed including pizzas and frozen food.

Key benefits:

- / Automated front-facing saves time for merchandising
- / Improved product and price visibility
- / Efficient space usage

Next™ Trays



Wire pusher tray Next™ WP3, metal sidewalls
Expandable width. Two metal side dividers. With front and pusher house.

Std Colour: Black
Std Width: 84-165 mm
Std Depth: 381; 432; 483; 533; 610 mm
Std Label H: 39x70 mm
Std Front:F2; F3; F3F; F6
Std. Spring: 4; 6; 9; 10; 12



WP3CB-M

Item	Colour	Label H	D	Spring	Front	Pusher	No/unit
890776	Black	39	432	10	F6	P5	12
890749	Black	39	483	10	F3	P5	12
730096	Black	39	483	10	F2	P3.5	10
890780	Black	39	533	10	F6	P5	10



Wire pusher tray Next™ WP3, high metal sidewalls
Expandable width. Two metal side dividers. With front and pusher house.

Std Colour: Black
Std Width: 84-165 mm
Std Depth: 381; 432; 483; 533; 610 mm
Std Label H: 39x70 mm
Std Front:F2; F3; F3F; F6
Std. Spring: 4; 6; 9; 10; 12

WP3CB-MH

Item	Colour	Label H	D	Spring	Front	Pusher	No/unit
726935	Black	39	432	10	F6	P5	8
896560	Black	39	483	10	F3	P5	8
898403	Black	39	483	10	F6	P5	8
726937	Black	39	533	10	F6	P5	8

Next™ Trays



Wire pusher tray Next™ WP3, wire sidewalls
Expandable width. With front and pusher house.

Std Colour: Black
Std Width: 84-165 mm
Std Depth: 381; 432; 483; 533; 610 mm
Std Label H: 39x70 mm
Std Front:F2; F3; F3F; F6
Std. Spring: 4; 6; 9; 10; 12



WP3CB-W

Item	Colour	Label H	D	Spring	Front	Pusher	No/unit
On offer, contact customer service							



Wire pusher tray Next™ WP3
Expandable width. With front and pusher house. Only for certain categories. Minimum one piece of WP3CB-W will be needed per row.

Std Colour: Black
Std Width: 84-165 mm
Std Depth: 381; 432; 483; 533; 610 mm
Std Front:F2; F3; F3F; F6
Std. Spring: 4; 6; 9; 10; 12



WP3CB-WS

Item	Colour	Label H	D	Spring	Front	Pusher	No/unit
On offer, contact customer service							



Wire pusher tray Next™ WP5 with metal side dividers
Expandable width. Two metal side dividers. With front and pusher house.

Std Colour: Black
Std Width: 135-305 mm
Std Label H: 39x93 mm
Std Front:F2F; F3; F3.5; F6
Std. Spring: 4; 6; 9; 10; 12

WP5CB-M

Item	Colour	Label H	D	Spring	Front	Pusher	No/unit
890770	Black	39	381	10	F3	P5	10
890768	Black	39	483	10	F3	P5	10
890767	Black	39	533	10	F3	P5	12
890766	Black	39	610	10	F3	P5	8



Wire pusher tray Next™ WP5 with high metal side dividers
Expandable width. Two metal side dividers. With front and pusher house.

Std Colour: Black
Std Width: 135-305 mm
Std Label H: 39x93 mm
Std Front:F2F; F3; F3.5; F6
Std. Spring: 4; 6; 9; 10; 12

WP5CB-MH

Item	Colour	Label H	D	Spring	Front	Pusher	No/unit
896377	Black	39	483	10	F3	P5	8
896557	Black	39	610	10	F3	P5	8
729488	Black	39	610	2x9	F3	P5	8



Wire pusher tray Next™ WP5 with wire side dividers
Expandable width. With front and pusher house.

Std Colour: Black
Std Width: 135-305 mm
Std Depth: 381; 432; 483; 533; 610 mm
Std Front:F2F; F3; F3.5; F6
Std. Spring: 4; 6; 9; 10; 12



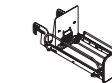
WP5CB-W

Item	Colour	Label H	D	Spring	Front	Pusher	No/unit
737576	Black	39	381	10	F3	P5	12
737583	Black	39	381	10	F6	P5	12
736675	Black	39	483	10	F6	P5	12
736676	Black	39	533	10	F6	P5	12



Wire pusher tray Next™ WP5
Expandable width. With front and pusher house. Only for certain categories. Minimum one piece of WP5CB-W will be needed per row.

Std Colour: Black
Std Width: 135-305 mm
Std Depth: 381; 432; 483; 533; 610 mm
Std Front:F2F; F3; F3.5; F6
Std. Spring: 4; 6; 9; 10; 12



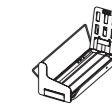
WP5CB-WS

Item	Colour	Label H	D	Spring	Front	Pusher	No/unit
On offer, contact customer service							



Wire pusher tray Pizza with wire side dividers
Expandable width. Two low wire dividers adjusted for round pizzas. With (curved) front and pusher house.

Std Colour: Black
Std Width: 135-305 mm
Std Depth: 381; 432; 483; 533; 610 mm
Std Label H: 39x93 mm
Std Front:F6
Std. Spring: 2x10



WP5CB-PL-

Item	Colour	Label H	D	Spring	Front	Pusher	No/unit
On offer, contact customer service							

Next™ Accessories



Crossbar with Euro brackets
With Euro brackets and plastic end plugs. One bar style fits all uprights/brackets.

Std Colour: Black
Std Width: 530; 610; 760; 770; 930; 1000; 1240; 1250; 1330 mm
Std Depth: 60 mm

WP-BAR-EUR

Item	Colour	W	No/unit
893149	Black	760	5
892022	Black	770	5
887645	Black	1000	5
895666	Black	1240	5
887646	Black	1250	5



Crossbar with Euro brackets, heavy duty
With Euro brackets and plastic end plugs. Heavy duty version, recommended to use with shelf depths of 500 mm and above. Suitable to be used with our Next™ range, as well as our Sigma™ pods.

Std Width: 530; 610; 760; 770; 930; 1000; 1240; 1250; 1330 mm
Std Mount: Brackets

CB-WP-XL

Item	Colour	W	Tape	Size	No/unit
948508	Black	1325	A	25x50	1



Air baffle kit Next™
Wire frame and plastic sheet to be mounted on the crossbar, ensuring cooler airflow in open coolers. The air baffle is required when shelving is removed from open coolers. It will help the air curtain and flow to work properly, and keep the required temperature in the back and front of the trays.

Std Colour: Black
Std Width: 610 mm
Std Depth: 381; 432; 483; 533; 610 mm

WPAB

Item	D	No/unit
889279	381	1
890503	432	1
889278	483	1
890782	533	1
889254	610	1



Metal sidewalls for Next™ WP3 trays
For 3" tray.

Std Colour: Black
Std Depth: 381; 432; 483; 533; 610 mm
Std Height: 73 mm

WP3 AVD-M

Item	Colour	D	H	No/unit
887648	Black	381	73	10
887649	Black	432	73	10
887650	Black	483	73	10
887651	Black	533	73	10



Metal sidewalls for Next™ WP5 trays
For 5" tray.

Std Colour: Black
Std Depth: 381; 432; 483; 533; 610 mm
Std Height: 73 mm

WP5 AVD-M

Item	Colour	D	H	No/unit
887653	Black	381	73	10
887654	Black	432	73	10
887656	Black	533	73	10



Sidewall extender for metal sidewalls
Mounted on top of the metal divider. Quickly added for additional support and stability.

Std Colour: Transparent
Std Depth: 381; 432; 483; 533; 610 mm
Std Height: 63; 127 mm

WP-AVD-EXT

Item	Colour	D	H	No/unit
889092		381	63	10
889091	Transp	432	63	100
887606		610	63	10
889095		432	127	10



Metal sidewalls for Next™ WP3 trays, high
Only for 3" tray.

Std Colour: Black
Std Depth: 381; 432; 483; 533; 610 mm
Std Height: 145 mm
Std Matr: Metal

WP3 AVD-MH

Item	Colour	D	H	No/unit
892566	Black	381	145	20
892567	Black	432	145	20
892572	Black	533	145	20
892573	Black	610	145	20



Metal sidewalls for Next™ WP5 trays, high
Only for 5" tray.

Std Colour: Black
Std Depth: 381; 432; 483; 533; 610 mm
Std Height: 145 mm
Std Matr: Metal

WP5 AVD-MH

Item	Colour	D	H	No/unit
896181	Black	381	145	20
896185	Black	483	145	20
896189	Black	533	145	20
896190	Black	610	145	20

Next™ Accessories



Metal sidewalls for Next™ WP5 trays, pizza
For 5" pizza tray.

Std Colour: Black

WP5-AVD-PL

On offer, contact customer service					
------------------------------------	--	--	--	--	--



Front stop F2 for Next™ WP3 trays

Std Colour: Transparent
Std Width: 76 mm
Std Height: 59 mm

WP3 F2

Item	Colour	W	H	Front	No/unit
889920	Transp	76	59	F2	2



Front stop F3 for Next™ WP3 trays

Std Colour: Transparent
Std Width: 76 mm
Std Height: 85 mm

WP3 F3

Item	Colour	W	H	Front	No/unit
887627	Transp	76	85	F3	2



Front stop F6 for Next™ WP3 trays

Std Colour: Transparent
Std Width: 76 mm
Std Height: 152-73 mm

WP3 F6

Item	Colour	W	H	Front	No/unit
887628	Transp	76	152-73	F6	2



Front stop F2 for Next™ WP5 trays

Std Colour: Transparent
Std Width: 127 mm
Std Height: 59 mm

WP5 F2

Item	Colour	W	H	Front	No/unit
887610	Transp	127	59	F2	2



Front stop F3 for Next™ WP5 trays

Std Colour: Transparent
Std Width: 127 mm
Std Height: 85 mm

WP5 F3

Item	Colour	W	H	Front	No/unit
887630	Transp	127	85	F3	2



Front stop F3,5 for Next™ WP5 trays

Std Colour: Transparent
Std Width: 152 mm
Std Height: 108 mm

WP5 F3,5

Item	Colour	W	H	Front	No/unit
887612	Transp	152	108	F3.5	2



Front stop F6 for Next™ WP5 trays

Std Colour: Transparent
Std Width: 152 mm
Std Height: 152-73 mm

WP5 F6

Item	Colour	W	H	Front	No/unit
887613	Transp	152	152-73	F6	2

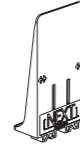
Automated fronting

Next™ Accessories



Pusher house for Next™ WP3 trays

Std Colour: Black
Std Width: 65 mm
Std Height: 89; 127; 165 mm



WP3 HOUSE

Item	Colour	W	H	Pusher	No/unit
887634	Black	65	89	3.5	1
890199	Black	65	127	5	1



Pusher spring for Next™

Std Colour: Aluminium
Std. Spring: 6; 9; 10; 12



WP SPRING

Item	Spring	No/unit
725007	4	1
887638	6	1
887642	9	1
887608	10	1
893898	12	1



Pusher house for Next™ WP5 trays

Std Colour: Black
Std Width: 116 mm
Std Height: 89; 127; 165 mm



WP5 HOUSE

Item	Colour	W	H	Pusher	No/unit
887609	Black	116	89	3.5	1
466578	Black	116	127	5	1



Connector for ESL holder for Next™ trays

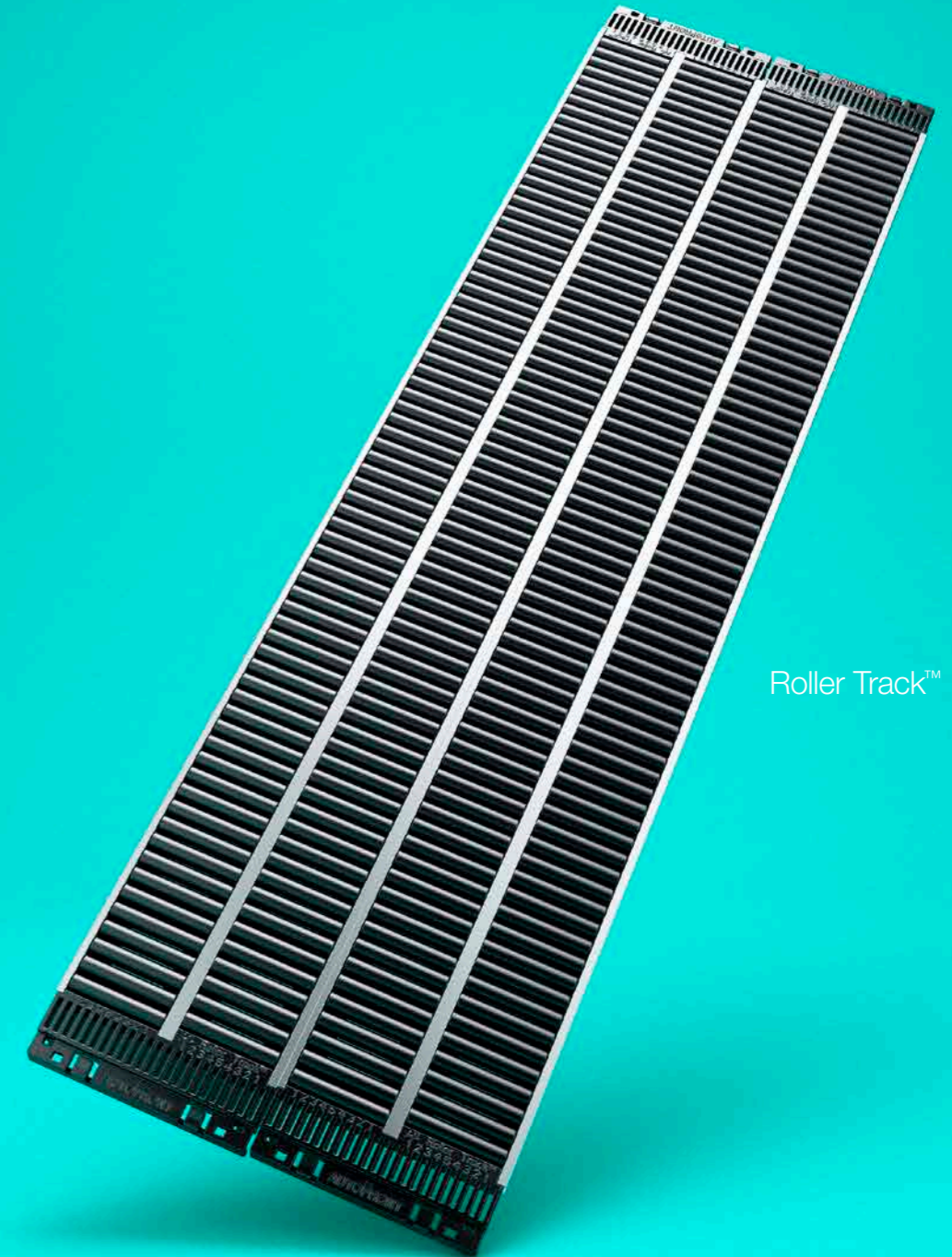
Connector attached to NEXT front which allows mounting the ESL holder.

Std Colour: Transparent



WP-REAR FOR ESL

Item	Colour	W	H	Spec.	No/unit
726854	Transp	50	47	WP3	1
726855	Transp	100	47	WP5	1



Roller Track™



Roller Track™

Well merchandised shelves with minimum maintenance

Roller Track™ is a shelf-ready gravity feed system that offers full visibility of products, allowing the shopper to make their choice quickly and easily. Gravity front-feeding also makes out-of-stock detectable immediately and simplifies stock replenishment, whether filling from the front or rear, helping to reduce labour time.

Roller Track™ is a set of rollers that when placed on the shelf, makes the product roll to the shelf edge. The rollers can be supplied as individual tracks or as a sheet covering the full shelf surface. Used with an angle provider or angled shelf brackets, the sheet will get a perfect angle to roll the products to the shelf edge.

Key benefits:

- / Avoid perceived out-of-stock with automated front-facing
- / Easy to install, use and maintain
- / Suitable for a variety of packaging formats and sizes

Roller Track™



Sheet

Ready-assembled sheet. Easy to install on existing shelves in-store and are easy to maintain. Exists in a various number of lengths and widths.

Std Colour: Grey; black



RT-HL SHEET

Item	Colour	W	D	No/unit
813752	Grey	984	564	1
813751	Grey	1247	347	1
813747	Grey	1230	501	1



Sheet with plate

Ready-assembled sheet with plate. Easy to install on existing shelves in-store and are easy to maintain. Exists in a various number of lengths and widths.

Std Colour: Grey; Black

RT-HL SHEET P

Item	Colour	W	D	No/unit
816380	Black	1247	501	4

Roller Track™



Track, single

One row of rollers. Used with RTO-STRIP and Optimal™ T-rail.

Std Colour: Grey; black
Std Width: 41 mm
Std Depth: 282; 387; 436; 485; 543; 681 mm



RTSO CN

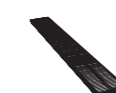
Item	Colour	W	D	No/unit
812373	Grey	41	282	80
812988	Grey	41	387	80
812377	Grey	41	485	80
812379	Grey	41	548	80
813189	Grey	41	681	80



Track, double

Two rows of rollers. Used with RTO-STRIP and Optimal™ T-rail.

Std Colour: Grey; black
Std Width: 80,4 mm
Std Depth: 282; 387; 436; 485; 543; 681 mm



RTDO CN

Item	Colour	W	D	No/unit
812364	Grey	80,4	387	40
812366	Grey	80,4	485	40
812368	Grey	80,4	548	40
813119	Grey	80,4	583	40
813186	Grey	80,4	681	40



Track, single, with plate

One row of rollers with plate. Used with RTO-STRIP and Optimal™ T-rail.

Std Colour: Grey; black
Std Width: 41 mm

RTSO-PLATE

On offer, contact customer service				
------------------------------------	--	--	--	--



Track, double, with plate

Two rows of rollers with plate. Used with RTO-STRIP and Optimal™ T-rail.

Std Colour: Grey
Std Width: 80,4 mm

RTDO-PLATE

On offer, contact customer service				
------------------------------------	--	--	--	--



Divider, metal

For RT- and RTL-SHEET. The divider's length is 20 mm shorter than the depth of the sheet.

Std Depth: 282; 387; 485; 548; 583; 681; 772 mm
Std Height: 25; 80 mm
Std Matr: Aluminium



RT-AVD

Item	Colour	D	H	Spec.	No/unit
862086	Alu	367	80	Track depth: 387 mm/ Sheet depth 403 mm	25
384682	Alu	463	25	Track depth: 485 mm/ Sheet depth 501 mm	50
863918	Alu	465	80	Track depth: 485 mm/Sheet depth 501 mm	25
386199	Alu	526	25	Track depth: 548 mm/ Sheet depth: 564 mm	50
862084	Alu	528	80	Track depth: 548 mm/ Sheet depth: 564 mm	25



Divider, wire

For RT- and RTL-SHEET.

Std Colour: White
Std Depth: 485; 548 mm
Std Height: 20; 80 mm
Std Matr: Metal



RT-AVD WIRE

Item	Colour	D	H	Spec.	No/unit
726294	White	367	25	Track depth: 387 mm/ Sheet depth 403 mm	10
726301	White	367	80	Track depth: 387 mm/ Sheet depth 403 mm	10
898217	White	465	80	Track depth: 485 mm/Sheet depth 501 mm	10
898215	White	528	80	Track depth: 548 mm/ Sheet depth: 564 mm	10



T-divider, wire

Divider to separate cone shaped products when using RollerTrack or GlideTrack. Fixes into the slots at the end of track.

Std Colour: White
Std Depth: 387; 485; 548; 583 mm
Std Height: 45 mm
Std Matr: Wire

RT-AVD WIRE-T

On offer, contact customer service				
------------------------------------	--	--	--	--



Double stack L-divider

Metal L-divider with spring pivot points in the front that enables merchandising of stacked product of various shapes and sizes.

Std Colour: White
Std Depth: 387; 436; 443; 485; 541; 548; 583; 646; 744 mm
Std Height: 110; 145 mm

RT-AVD-DS-L

On offer, contact customer service				
------------------------------------	--	--	--	--

Roller Track™



Double stack T-divider

Metal T-divider with spring pivot points in the front that enables merchandising of stacked product of various shapes and sizes.

Std Colour: White
Std Depth: 387; 436; 443; 485; 541; 548; 583; 646; 744 mm
Std Height: 110; 145 mm

RT-AVD-DS-T

On offer, contact customer service	
------------------------------------	--



Divider with pusher, small

Metal divider with small pusher. The pusher house has small holes that enables to mount a customised back plate by using two (2) viking screws.

Std Colour: Black, Metal
Std Width: 48 mm
Std Depth: 459; 501; 557; 662; 760 mm
Std Height: 86 mm
Std. Spring: 6Z; 9L

RTZ80-P2

Item	Colour	D	H	Spring	Pusher	Spec.	No/unit
958359	Black	423	80	9L	P2	Track depth: 443 mm/ Sheet depth: 459 mm	1
813984	Black	465	80	6Z	P2	Track depth: 485 mm/ Sheet depth 501 mm	25
958361	Black	521	80	9L	P2	Track depth: 541 mm/ Sheet depth: 557 mm	1
813422	Black	626	80	9L	P2	Track depth: 646 mm/ Sheet depth: 662 mm	25
958357	Black	724	80	9L	P2	Track depth: 744 mm/ Sheet depth: 760 mm	250



Divider with pusher

Metal divider with pusher. The pusher house has small holes that enables you to mount a customised back plate by using two (2) viking screws.

Std Colour: Black
Std Depth: 459; 501; 557; 662; 760 mm
Std Height: 90 mm
Std. Spring: 6Z; 9L



RTZ80-P3

Item	Colour	D	H	Spring	Pusher	Spec.	No/unit
813351	Black	423	80	6Z	P3	Track depth: 443 mm/ Sheet depth: 459 mm	25
812441	Black	465	80	6Z	P3	Track depth: 485 mm/ Sheet depth 501 mm	25
813350	Black	521	80	6Z	P3	Track depth: 541 mm/ Sheet depth: 557 mm	25
812476	Black	626	80	6Z	P3	Track depth: 646 mm/ Sheet depth: 662 mm	25
812200	Black	724	80	9L	P3	Track depth: 744 mm/ Sheet depth: 760 mm	24



Front profile

Can be used with OPT-TP19, OTR or OTEF. Suitable for printed graphics.

Std Colour: Transparent

OPT-FR SLIDABLE

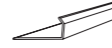
Item	Colour	W	H	No/unit
567129	Transp	900	90	42
567990	Transp	1247	70	165
577474	Transp	1247	90	12
577471	Transp	1247	110	19



Front profile

Used for stopping the sheet from gliding of the shelf.

Std Colour: Transparent
Std Mount: Foam tape



RTF

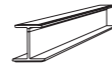
Item	Colour	W	Mount	Tape	No/unit
863269	Transp	990	Foam tape	TF19	20
861829	Transp	1000	Foam tape	TFC19	20
468073	Transp	1328	Foam tape	TFC19	20



Angle adapter

Used to create an angle when mounting the sheet to a flat shelf. One side magnetic, one side foam tape. Placed underneath the sheet.

Std Height: 30 mm
Std Mount: Tape



RT-AA

Item	Colour	W	H	en_Mount	Tape	No/unit
468907	Transp	893	30	Foam tape,Magnet tape	TF,TM	25
468597	Transp	965	30	Foam tape,Magnet tape	TF,TM	25
469823	Black	1245	30	Foam tape,Magnet tape	TF,TM	25
469316	Transp	1328	30	Foam tape,Magnet tape	TF,TM	25



Angle adapter, large

Used to create an angle when mounting the sheet to a flat shelf. One side has magnetic tape, the other one has foam tape. Placed underneath the sheet. Used together with the RT-AA when the shelf depths is more than 540 mm.

Std Colour: Transparent
Std Height: 80 mm
Std Mount: Tape

RT-AA80

Item	Colour	W	H	en_Mount	Tape	No/unit
892081	Transp	995	80	Foam tape,Magnet tape	TF,TM19	10
889653	Transp	1245	80	Foam tape,Magnet tape	TF,TM19	10
876616	Transp	1328	80	Foam tape,Magnet tape	TF,TM19	10



Angle adapter in four steps

Used to create an angle when mounting the sheet to a flat shelf. Placed in the aluminum profile on the backside of the sheet. Std length 100 mm.

RT-A4S

On offer, contact customer service				
------------------------------------	--	--	--	--

Roller Track™



Angle adapter, metal

Used to create an angle when mounting the sheet to a flat shelf. Placed in the holes underneath the sheet. Use only 3 or 4 pcs per shelf. Holds weights of up to 80 kg per shelf.

Std Height: 37 mm
Std Matr: Galvanized steel



RT-AP37

Item	H	No/unit
396051	37	50



Clips for RTZ dividers with pusher

Reinforces and stabilizes the RTZ-divider to the Roller Track™. The RTZ-CLIP has two flaps which go into the holes closest to the RTZ-divider. For shelf depths of 500 and 550 mm, one single clip in the front is usually sufficient. For racking (600 mm and above) – use a clip both in the front and in the back.



RTZ-CLIP

Item	No/unit
879215	50

GlideTrack™



GlideTrack™, single track

One row of rollers. Used with RTO-STRIP and Optimal™ T-rail.

Std Colour: Black
Std Width: 41 mm

GTSO

Item	D	No/unit
818457	387	1
818458	485	1
818459	548	1
818460	583	1
818461	681	1



GlideTrack™, ready-assembled sheet

Ready-assembled sheet. Easy to install on existing shelves in-store and are easy to maintain. Exists in a various number of lengths and widths.

Std Colour: Black

GT-SHEET

Item	W	D	No/unit
818342	724	599	1
818328	894	599	1
818347	1206	501	1
818348	1206	403	1



GlideTrack™, double track

Two rows of rollers. Used with RTO-STRIP and Optimal™ T-rail.

Std Colour: Black

GTDO

Item	D	No/unit
818324	387	1
818325	485	1
818326	548	1
818434	583	1
818435	681	1



TurnLoader™ & RotoShelf™

Efficient merchandising and refilling

Thanks to a 180° rotating movement, all shelves of **TurnLoader™** and **RotoShelf™** move at once, allowing for quick restocking from the back; simply rotate, refill, rotate the section back, and chilled products are always automatically front-faced.

Both rotating shelf solutions use space optimising gravity shelves with built-in dividers. **TurnLoader™** shelves have straight edges for larger volume of products. Suitable for chillers, TurnLoader™ can be integrated into an existing fridge cabinet design. Alternatively, they can be retrofitted and installed into a new retail concept.

RotoShelf™ has two columns of shelves with round edges which can be adjusted individually for maximum flexibility.

Key benefits:

- / Automated front-facing for more efficient shelf management
- / Faster refilling with the 'first in, first out' principle
- / Flexible set-up allows for various can/bottle heights

RotoShelf™



RS2MD FA1250/2

Item	No/unit
464906	1

Rotating frame kit

Frame section for RotoShelf. Frame height and shelf positioning are both adjustable within the rotating frame, giving greater flexibility and enhanced opportunities to maximise product density. For Multideck 1250 sections with min. innerheight between 1400 mm and 1800mm. Minimum chiller depth 530mm. A 1250 section fits two columns of round rotating shelf kits (RS2MD SK) and number of shelves can be configured to your planogram.



RS2MD FA1875/3

Item	No/unit
On offer, contact customer service	

Rotating frame kit

Frame section for Rotoshelf. Shelf position is adjustable within the rotating frame. A 1875 section fits three columns of rotating round edged shelves. For Multideck 1875 sections with min. inner height between 1400 mm and 1800mm. Minimum chiller depth 530mm.

RotoShelf™



Bracket for rotating frame

Universal top and bottom brackets for fitting RotoShelf in Multidecks. 25/30mm and 25mm/32mm. Works with RS2MD FA frame.

RS2MD BRACKET TB

Item	Size	No/unit
464908	25/30 mm	1
464913	25/32 mm	1



Bracket

RS2MD BRACKET MID

Item	No/unit
On offer, contact customer service	



RS2MD SK

Item	No/unit
464907	1

Rotating shelf kit

Shelf kit for RotoShelf, includes: Universal 70 shelf, shelf holder, frontstop H110mm, labelholder and 7 breakable dividers.

Std Colour: White



MD BS

Item	No/unit
On offer, contact customer service	

Base shelf for multideck

With gravity slide feature, includes: frame, slide, dividers and front stopper.

Std Colour: Grey



Rotoshelf™, front stop

Frontstop for RotoShelf™. Used with round rotating shelf kits (RS2MD SK)

RS2MD FS

Item	H	No/unit
467977	54	5
467978	113	5
467979	143	5
467980	163	5

TurnLoader™



TurnLoader™ frame kit
 Frame section for TurnLoader™. A 1250 section fits straight edged rotating shelves. Frame height and shelf positioning are both adjustable within the rotating frame. Fits shelf kits (TL2MD SK) and number of shelves can be configured to your planogram. For Multideck 1250 sections with min. innerheight between 1510 mm and 1800mm. Minimum chiller depth 655mm.

Std Mount: Brackets

TL2MD FA

Item	No/unit
469333	1



TurnLoader™, front stop
 Frontstop for TurnLoader™, used with TL2MD SK.

TL2MD FS

Item	H	Size	No/unit
468942	54	TL2MD1250	5
468917	113	TL2MD1250	5
468958	143	TL2MD1250	5
469011	163	TL2MD1250	5



TurnLoader kit
 TurnLoader kit for 1250mm section including 4 shelves (450mm deep) and 25/30 reversible brackets.

TL2MD KITS

Item	Size	Spec.	No/unit
469346	TL2MD 1250/450		1
469347	TL2MD 1250/550	TL2MD 1250/550	1



Base shelf for multideck
 With gravity slide feature, includes: frame, slide, dividers and front stopper.

Std Colour: Grey

MD BS

On offer, contact customer service			
------------------------------------	--	--	--



TurnLoader™ bracket
 Universal brackets for fitting TurnLoader™ in Multidecks. 25mm, 30mm and 32mm. Works with TL2MD FA.

TL2MD BRACKET TB

Item	Size	Spec.	No/unit
469334	25/30mm	TL2MD1250/450	1
469335	25/32mm	TL2MD1250/450	1
469337	25/30mm	TL2MD1250/550	1
469338	25/32mm	TL2MD1250/550	1



TurnLoader™ shelf kit
 Shelf kit for TurnLoader, includes: adjustable shelf holder, 2 plastic glides, frontstop H94mm and 15 breakable dividers.

TL2MD SK

Item	Size	No/unit
469012	TL2MD 1250/450	1

RotoShelf™





Facer™

Front-faced
in one pull

Facer™ frames reduce the risk of overfilling and damaging bottles while ensuring aligned and front-faced products, speeding up the process of restocking shelves.

Each lane of bottles or cans is maintained in a width-adjustable steel frame hidden behind the front riser. Flexible and effective, the frames are placed directly on the shelf and work whichever way they are installed. To front-face, lift the frame up from behind the riser, pull the frame forward, drag the products to the front of the shelf and slide the frame back into place behind the front riser.

Key benefits:

- / Saves time through simplified refilling and front-facing
- / Lowers risk of over-stocking and broken bottles
- / Keeps products aligned

Facer™



Pull-frame

Stepless adjustable frame. Integrated dividers. Inner channel length is 15 mm less than total length.

Std Colour: Grey RAL7016; Dark grey RAL7022; Black RAL9005; Silver grey RAL9006; Cream RAL9010
Std Width: 47-70; 68-110; 80-122 mm
Std Depth: 295; 355; 385; 395; 455; 485; 495; 522; 555; 595; 655; 755; 795 mm
Std Matr: Galvanized steel

FACER-FRAME

Item	Colour	W	D	Spec.	No/unit
891592	Silver/grey RAL9006	47-70	595	Ambient	45
741971	Silver/grey RAL9006	68-110	555	Ambient	27
883190	Silver/grey RAL9006	68-110	500	Ambient	27
883191	Silver/grey RAL9006	68-110	595	Ambient	27



Pull-frame XL

Extra large stepless adjustable frame. Integrated dividers. Inner channel length is 15 mm less than total length.

Std Colour: Silver/grey
Std Width: 100-200; 200-300 mm
Std Depth: 395; 455; 485; 495; 555; 595; 800; 1000 mm
Std Matr: Galvanized steel

FACER-XL

Item	Colour	W	D	Spec.	No/unit
528551	Silver/grey RAL9006	100-200	395	Ambient	28
528554	Silver/grey RAL9006	100-200	455	Ambient	28
528547	Silver/grey RAL9006	100-200	485	Ambient	28
528553	Silver/grey RAL9006	100-200	495	Ambient	28
528552	Silver/grey RAL9006	100-200	595	Ambient	28

Facer™



Front profile for Facer™ frames

With integrated front riser and label pocket. For FACER-FRAME. High gloss.

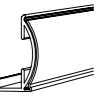
Std Colour: White and grey
Std Depth: 21 mm
Std Height: 30 mm
Std Label H: 26 mm



Front profile for Facer™ frames

With integrated front riser and label pocket. For FACER-FRAME. High gloss.

Std Colour: White and grey
Std Depth: 12 mm
Std Label H: 25 mm



FAC25

Item	Colour	Label H	W	H	Mount	Tape	No/unit
739142	Black	25	890	25	Foam tape	TF12	25
888329	Black	25	895	25	Foam tape	TF12	25
888331	Black	25	1245	25	Foam tape	TF12	25
886895	White	25	1330	25	Foam tape	TF12	25
729801	Black	25	1330	25	Foam tape	TF12	25

FAC26R

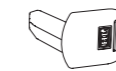
Item	Colour	Label H	W	D	H	Mount	Tape	No/unit
459095	White	26	1000	21	30	Foam tape	TF19	25
459099	Grey S24	26	1000	21	30	Foam tape	TF19	25
459100	Grey S24	26	1245	21	30	Foam tape	TF19	25
459101	Grey S24	26	1330	21	30	Foam tape	TF19	25



End cap and sign holder

For FAC25. Builds 2 mm on each side of the strip. Also works as a sign holder for signs up to 1 mm thickness. The end cap prevents the exterior pull frames from sliding off the shelf.

Std Colour: Transparent
Std Size: 25 mm



FACER-END

Item	Colour	W	No/unit
883133	Transp	25	50



Back clip support for bottles

Std Colour: Grey
Std Width: 63.5 mm
Std Depth: 12.55 mm
Std Height: 101.6 mm



FACER-BACK CLIP

Item	Colour	W	D	H	No/unit
459208	Grey	63	12	101	100



Optimal™

Clear and attractive shelf segmentation

With more than 250 million dividers sold, **Optimal™** is an effective divider system developed to keep shelves well organised with less time spent, while being adaptable to fit many packaging formats. Optimal™ is easy to install and adjust and works with all types of shelving.

Dividers can be combined with pushers to automate front-facing, and slow motion pushers allow for double- or triple stacking of products. For beverages, the **Optimal™ pusher tray** ensures automated front-facing to save time on merchandising and avoid products to be perceived out-of-stock.

Dividers and pusher tracks are part of the HL Sustainable Choice range and are made from partially recycled plastic. The **Optimal™ black divider** is made from 100% recycled plastic – for every 1000 dividers about 170kg of virgin plastic are saved.

Key benefits:

- / Ensures perfect product presentation for most packing formats
- / Easy to install and adjust
- / Ambient- and cooler-friendly



Optimal™ Dividers



Divider, breakable, 25mm high
Mounted on T-rail at the front and the OBR+ rail at the back. When used with a pusher or on angled shelves, choose suitable front stop. Break points every 25 mm.

Std Colour: Transparent
Std Depth: 185-385; 285-485; 385-585 mm
Std Height: 25 mm
Std Matr: Recycled PET

Item	Colour	D	H	No/unit
872037	Transp	185-385	25	24
872767	Transp	285-485	25	24
872769	Transp	385-585	25	24



Divider, breakable, 35mm high
Mounted on T-rail at the front. Break points every 25 mm.

Std Colour: Transparent
Std Depth: 185-410 mm
Std Height: 35 mm
Std Matr: Styrene

Item	Colour	D	H	No/unit
375094	Transp	185-410	35	20

Optimal™ Dividers



L-divider, breakable, 35mm high
Mounted on T-rail at the front. With a 30 mm high L front. Break points every 25 mm.

Std Colour: Transparent
Std Depth: 185-410 mm
Std Height: 35 mm
Std Matr: Styrene

OPT-AVD35RBLA				
Item	Colour	D	H	No/unit
364989	Transp	185-410	35	20



T-divider, breakable, 35mm high
Mounted on T-rail at the front. With a 30 mm high T front. Break points every 25 mm.

Std Colour: Transparent
Std Depth: 185-410 mm
Std Height: 35 mm
Std Matr: Styrene

OPT-AVD35RBTA				
Item	Colour	D	H	No/unit
364990	Transp	410	35	20



Divider, breakable, 60mm high
Mounted on T-rail at the front and the OBR+ rail at the back. When used with a pusher or on angled shelves, choose suitable front stop. Break points every 25 mm.

Std Colour: Transparent
Std Depth: 185-385; 285-485; 385-585 mm
Std Height: 60 mm
Std Matr: Recycled PET

OPT-AVD60B+				
Item	Colour	D	H	No/unit
866852	Transp	185-385	60	24
866970	Transp	285-485	60	24
866973	Transp	385-585	60	24



L-divider, breakable, 60mm high
Mounted on T-rail at the front and the OBR+ rail at the back. Used together with a pusher or on angled shelves. Break points every 25 mm. Delivered in pairs of one left and one right L-divider. An order can only be placed in even quantity, and will contain an equal amount of left and right L-dividers.

Std Colour: Transparent
Std Depth: 185-385; 285-485; 385-585 mm
Std Height: 60 mm
Std Matr: Recycled PET

OPT-AVD60BL+				
Item	Colour	D	H	No/unit
868517	Transp	185-385	60	20
868518	Transp	285-485	60	20
868519	Transp	385-585	60	20



T-divider, breakable, 60mm high
Mounted on T-rail at the front and the OBR+ rail at the back. Used together with a pusher or on angled shelves. Break points every 25 mm.

Std Colour: Transparent
Std Depth: 185-385; 285-485; 385-585 mm
Std Height: 60 mm
Std Matr: Recycled PET

OPT-AVD60BT+				
Item	Colour	D	H	No/unit
868512	Transp	185-385	60	16
868513	Transp	285-485	60	16
868516	Transp	385-585	60	16



T-divider, breakable, 60mm high
Mounted on T-rail at the front and the OBR+ rail at the back. Used together with a pusher or on angled shelves. With a front stop of 30 mm. Break points every 25 mm.

Std Colour: Transparent
Std Depth: 185-385; 285-485; 385-585 mm
Std Height: 60 mm
Std Matr: Recycled PET

OPT-AVD60BT3+				
Item	Colour	D	H	No/unit
868397	Transp	185-385	60	16
868401	Transp	285-485	60	16
868403	Transp	385-585	60	16



Sliding divider, breakable, 60mm high
Divider with a sliding front grip. Used if there is a need to adjust dividers to the facing width without demounting dividers. No other front option available. Lengths in steps of 25 mm. To be mounted on standard Optimal T-rail at the front. Choose from our wide range of Optimal rails and accessories to fit the shelf you are equipping with the Optimal+ system.
Std Colour: Transparent
Std Depth: 185-385; 285-485; 385-585 mm
Std Height: 60 mm
Std Matr: Recycled PET

OPT-AVD60SB+				
Item	Colour	D	H	No/unit
152835	Transp	185-385	60	24
152834	Transp	285-485	60	24
159139	Transp	385-585	60	24



Divider, breakable, 120mm high
Mounted on T-rail at the front and the OBR+ rail at the back. When used with a pusher or on angled shelves, choose suitable front stop. Break points every 25 mm.

Std Colour: Transparent
Std Depth: 185-385; 285-485; 385-585 mm
Std Height: 120 mm
Std Matr: Recycled PET

OPT-AVD120B+				
Item	Colour	D	H	No/unit
866968	Transp	285-485	120	24
866853	Transp	185-385	120	24
866969	Transp	385-585	120	24

Optimal™ Dividers



L-divider, breakable, 120mm high
 Mounted on T-rail at the front and the OBR+ rail at the back. Used together with a pusher or on angled shelves. With a front stop of 80 mm. Break points every 25 mm. Delivered in pairs.

Std Colour: Transparent
 Std Depth: 185-385; 285-485; 385-585 mm
 Std Height: 120 mm
 Std Matr: Recycled PET



OPT-AVD120BL+

Item	Colour	D	H	No/unit
868866	Transp	185-385	120	20
868351	Transp	285-485	120	20
868523	Transp	385-585	120	20



L-divider, breakable, 120mm high
 Mounted on T-rail at the front and the OBR+ rail at the back. Used together with a pusher or on angled shelves. Break points every 25 mm. Delivered in pairs.

Std Colour: Transparent
 Std Depth: 185-385; 285-485; 385-585 mm
 Std Height: 120 mm
 Std Matr: Recycled PET



OPT-AVD120BL12+

Item	Colour	D	H	No/unit
869055	Transp	185-385	120	20
869104	Transp	285-485	120	20
869106	Transp	385-585	120	20



T-divider, breakable, 120mm high
 Mounted on T-rail at the front and the OBR+ rail at the back. Used together with a pusher or on angled shelves. With a front stop of 80 mm. Break points every 25 mm.

Std Colour: Transparent
 Std Depth: 185-385; 285-485; 385-585 mm
 Std Height: 120 mm
 Std Matr: Recycled PET



OPT-AVD120BT+

Item	Colour	D	H	No/unit
867110	Transp	185-385	120	16
868028	Transp	285-485	120	16
868114	Transp	385-585	120	16



T-divider, breakable, 120mm high
 Mounted on T-rail at the front and the OBR+ rail at the back. Used together with a pusher or on angled shelves. Break points every 25 mm.

Std Colour: Transparent
 Std Depth: 185-385; 285-485; 385-585 mm
 Std Height: 120 mm
 Std Matr: Recycled PET



OPT-AVD120BT12+

Item	Colour	D	H	No/unit
869054	Transp	185-385	120	16
868520	Transp	285-485	120	16
868522	Transp	385-585	120	16



T-divider, breakable, 120mm high
 Mounted on T-rail at the front and the OBR+ rail at the back. Used together with a pusher or on angled shelves. With a front stop of 30 mm. Break points every 25 mm.

Std Colour: Transparent
 Std Depth: 185-385; 285-485; 385-585 mm
 Std Height: 120 mm
 Std Matr: Recycled PET



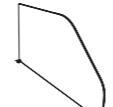
OPT-AVD120BT3+

Item	Colour	D	H	No/unit
872540	Transp	185-385	120	16
868521	Transp	285-485	120	16
872541	Transp	385-585	120	16



Divider, 200mm high
 Mounted on T-rail at the front and the OBR+ rail at the back. When used with a pusher or on angled shelves, choose suitable front stop. Lengths in step of 25 mm.

Std Colour: Transparent
 Std Depth: 385; 485; 585 mm
 Std Height: 200 mm
 Std Matr: Recycled PET



OPT-AVD200+

Item	Colour	D	H	No/unit
867103	Transp	585	200	12
866582	Transp	385	200	12
867101	Transp	485	200	12



T-divider, 200mm high
 Mounted on T-rail at the front and the OBR+ rail at the back. Used together with a pusher or on angled shelves. With a front stop of 180 mm. Lengths in 50 mm intervals.

Std Colour: Transparent
 Std Depth: 385; 485; 585 mm
 Std Height: 200 mm
 Std Matr: Recycled PET



OPT-AVD200T+

Item	Colour	D	H	No/unit
871559	Transp	385	200	12
871556	Transp	485	200	12
871555	Transp	585	200	12

Optimal™ Rails



Back rail
 Back rail to attach Optimal+™ dividers and trays on the back of the shelf. Suitable for wooden, glass and metal shelves.

Std Colour: Available in different colours
 Std Mount: Tape



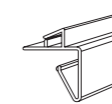
OBR+

Item	Colour	W	Mount	Tape	No/unit
870279	Transp	890	Magnet tape	TM25	50
861304	Transp	1000	Magnet tape	TM25	50
863377	Transp	1245	Magnet tape	TM25	50
867109	Transp	1250	Magnet tape	TM25	50
863642	Transp	1330	Magnet tape	TM25	50



Back rail for TegoMetal shelving
 Fits TegoMetal shelf.

Std Colour: Transparent



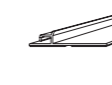
OBR+

Item	Colour	W	No/unit
870613	Transp	1000	50
870677	Transp	1238	50



Back rail, wide
 Back rail to attach Optimal+™ dividers and trays on the back of the non-wire shelves. Used for angled shelves.

Std Colour: Transparent, white
 Std Mount: Foam tape



OBRW+

Item	Colour	W	Mount	Tape	No/unit
874559	Transp	895	Foam tape	TTF19	50
725819	Transp	1000	Foam tape	TTF19	50
872914	White	1000	Foam tape	TTF19	50
882952	Transp	1330	Foam tape	TTF19	50
872916	White	1330	Foam tape	TTF19	50



Back rail for wire shelves
 Back rail to attach Optimal+™ dividers and trays on the back of wire shelves. Fits shelves with a wire diameter of 2.8-3.0 mm. Clips are included.

Std Colour: Transparent
 Std Mount: Clips



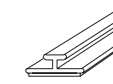
OBR+ OW3.0

Item	Colour	W	Mount	Tape	No/unit
871306	Transp	1000	Clips		50
876379	Transp	1248	Clips		50
899008	Transp	1330	Clips		50
899490	Transp	985	Clips		50



Front rail, narrow
 Fits all non-wire shelves.

Std Colour: Transparent



OPB

Item	Colour	W	D	Mount	Tape	No/unit
305922	Transp	1330	15	Tape	TP9	100
305919	Transp	995	15	Tape	TP9	100
300311	Transp	1000	15	Tape	TP9	100
300831	Transp	1250	15	Tape	TP9	100
300629	Transp	895	15	Tape	TP9	100



Front rail, wide
 Fits all non-wire shelves.

Std Colour: Transparent, white
 Std Depth: 30 mm



OPH

Item	Colour	W	D	Mount	Tape	No/unit
302293	Transp	1000	25	Magnet tape	TM25	50
307528	Transp	1250	25	Magnet tape	TM25	50
307543	White	1330	25	Magnet tape	TM25	50
307531	Transp	1330	25	Magnet tape	TM25	50



Front rail for wire shelves, wide
 Fits wire shelves with wire diameter 2.8 - 3.0 mm. Clips are included.

Std Colour: Transparent
 Std Width: 244-1377 mm
 Std Depth: 30 mm
 Std Mount: Clips



OPH-OW3.0

Item	Colour	W	Mount	No/unit
317067	Transp	760	Clips	50
309891	Transp	1000	Clips	50
309775	Transp	1330	Clips	50
327387	Transp	1250	Clips	50



Front rail for angled shelves, wide
 Fits all non-wire shelves. For angled shelves.

Std Colour: Transparent; White
 Std Depth: 40 mm



OPHW

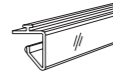
Item	Colour	W	Mount	Tape	No/unit
314231	Transp	895	Foam tape	TTF19	75
333775	Transp	1000	Foam tape	TTF19	75
336101	White	1245	Foam tape	TTF19	75
323504	White	1330	Foam tape	TTF19	75

Optimal™ Rails



Front rail for TegoMetal shelving
Fits TegoMetal shelves with U-channels at front and rear.

Std Colour: Transparent



OTEF

Item	Colour	W	No/unit
330373	Transp	655	50
317334	Transp	988	50
333834	Transp	1000	50
313691	Transp	1320	50
354451	Transp	1330	50

Optimal™ Front Risers



Front riser
Front riser that can be used with different front rails with a grip for a front riser e.g. COPT, OFRKB3. Suitable for printed graphics.

Std Colour: Transparent
Std Height: 60; 70; 90; 110 mm



OPT-FR

Item	Colour	W	H	No/unit
368632	Transp	998	60	50
868228	Transp	1248	60	50
380894	Transp	998	120	50



Front riser, base
A two part solution, mount the OPT-FR front riser (3.0 mm thick) in the base. Fits all non-wire shelves.

Std Colour: White



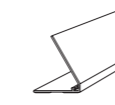
OFRKB3

Item	Colour	W	Mount	Tape	No/unit
371376	Grey S10	1000	Magnet tape	TTM25	25
373586	Grey S10	1245	Magnet tape	TTM25	25
365695	White	1245	Magnet tape	TTM25	25
897084	Transp	1330	Magnet tape	TTM19	25
375983	Transp	1330	Magnet tape	TTM25	25



Front riser, angled, for gravity feeding
Used for gravity feed system. Fits all non-wire shelves.

Std Colour: Transparent with white base
Std Height: 80 mm
Std Mount: Foam tape



OFRK80A

Item	Colour	W	H	Mount	Tape	No/unit
331873	Transp	895	80	Magnet tape	TTM25	25
343388	Cream W13	1330	80	Foam tape	TTF19	25



Front riser
Prevents merchandise from falling over the shelf edge.

Std Colour: Transparent with white base
Std Height: 30; 40; 60; 80 mm
Std Matr: PETG



OFRK

Item	Colour	W	H	Mount	Tape	No/unit
333090	White	1000	60	Magnet tape	TTM25	25
317061	Transp	1250	30	Magnet tape	TM25	25
356129	Transp	1330	30	Magnet tape	TM25	25
343830	Transp	1000	40	Magnet tape	TM25	30
320185	Transp	1245	80	Magnet tape	TTM25	15

Optimal™ Front Risers



Front riser for wire shelves
Prevents merchandise from falling over the shelf edge. Used for wire shelves with diameter 2.8 - 3.0 mm.

Std Colour: Transparent
Std Width: 244-1377 mm



OFRK-OW3.0

Item	Colour	W	H	Mount	No/unit
366530	Transp	750	60	Clips	25
399743	Transp	1320	60	Clips	25
362362	Transp	750	80	Clips	15
335430	Transp	980	40	Clips	30



Front riser with rail
For TegoMetal shelves. Fits U-channels in front.

Std Colour: Transparent
Std Height: 40 mm



OTEF40

Item	Colour	W	H	No/unit
885616	Transp	988	40	50
886710	Transp	1230	40	50



Front riser
Prevents merchandise from falling over the shelf edge.

Std Colour: Transparent
Std Height: 30 mm
Std Matr: PVC

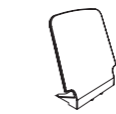
OFR

Item	Colour	W	H	No/unit
On offer, contact customer service				



Front stop for OP50, angled
Mounted on a OP50 track.

Std Colour: Transparent
Std Width: 65 mm
Std Height: 65 mm
Std Matr: Polycarbonate



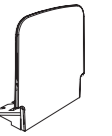
OP50-FLF20

Item	Colour	H	No/unit
857440	Transp	65	10



Front stop for OP50, straight
Mounted on a OP50 track.

Std Colour: Transparent
Std Width: 58 mm
Std Height: 30; 50 mm
Std Matr: Polycarbonate



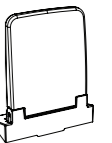
OP50-FLF

Item	Colour	H	No/unit
889789	Transp	30	20
855717	Transp	50	10



Front stop, straight, automatic flip down
Mounted on a OP50 track. Automatic flip down front makes product loading simpler and quicker especially for high products and tight shelves.

Std Colour: Transparent
Std Width: 42 mm
Std Height: 42,5; 55 mm
Std Matr: Polycarbonate



OP50-FDF

Item	W	H	No/unit
164037	42	42,5	1
164038	42	55	1

Optimal™ Pushers



Pusher, breakable, 25mm wide
Mounted on T-rail at the front. Break points every 25 mm. Used together with front stop dividers or an front stop profile like OFRK.

Std Colour: Grey S8
Std Width: 25 mm
Std Depth: 185-385; 285-485; 385-585 mm
Std Height: 55 mm
Std. Spring: 3; 6; 9

OP25B+

Item	Colour	W	D	Spring	No/unit
887140	Grey S8	25	185-385	3	20
887141	Grey S8	25	285-485	3	20
887157	Grey S8	25	285-485	6	20
887172	Grey S8	25	285-485	9	20
887156	Grey S8	25	185-385	6	20



Pusher, breakable, 50mm wide
Mounted on T-rail at the front and the OBR+ rail at the back. Break points every 25 mm. For end stop use OP50B STOP-MINI.

Std Colour: Grey, white
Std Width: 50 mm
Std Depth: 185-385; 285-485; 385-585 mm
Std Height: 73 mm
Std. Spring: 3; 6; 9
Std Matr: ABS

OP50SB+

Item	Colour	W	D	Spring	No/unit
154179	Grey S8	50	285-485	3	20
152846	Grey S8	50	285-485	6	20
154176	Grey S8	50	385-585	9	20
154183	Grey S8	50	285-485	9	20



Slow motion pusher
Compatible with Optimal™ front rail . Breakable every 25 mm. This pusher type allows better space optimization, as well as shrinkage reduction. Width track 43mm, total width 48mm.

Std Colour: Grey and white
Std Width: 48 mm
Std Depth: 285-485 mm
Std Height: 75 mm
Std. Spring: 6N; 9N; 10N; 12N

SMP40B-OPT

Item	Colour	W	D	Spring	No/unit
813063	Grey S8	48	285-485	6	25



Clip for OP25B+ pusher
Attaches the breakable Optimal™+ track to the OBR+ back rail.

Std Colour: Grey
Std Width: 25 mm
Std Matr: ABS

OP25B+ CLIP

Item	Colour	W	No/unit
893817	Transp	25	20



Clip for OP50B+ or OP50SB+ pusher
Attaches the breakable Optimal™+ pusher at the OBR+ back rail.

Std Colour: Grey
Std Width: 50 mm
Std Matr: ABS

OP50B+ CLIP

Item	Colour	W	No/unit
875165	Grey	50	20

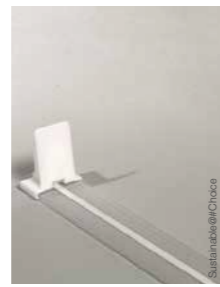


End stop for OP50B+ or OP50SB+
Prevents the pusher house from gliding off the back. Used at the back of OP50B+ or OP50SB+ pushers.

Std Colour: Grey
Std Matr: ABS

OP50B-STOP-MINI

Item	Colour	No/unit
865595	Grey S8	20



Pusher with pull-strip
Mounted on T-rail at the front and the OBR+ rail at the back. With integrated Pull-Strip™. Track lengths in 25 mm intervals.

Std Width: 50 mm
Std Depth: 185-585 mm
Std Height: 73 mm

OP50-PIN

On offer, contact customer service					
------------------------------------	--	--	--	--	--



Clip
Attaches the breakable slow motion pusher SMP40B-OPT and SMP40B-MU to the OBR+ back rail.

Std Colour: Grey
Std Width: 40 mm
Std Matr: ABS

SMP40 CLIP

Item	Colour	W	No/unit
460468	Grey S8	40	100

Optimal™ Pushers



Front stop, automatic flipdown, wide
Mounted on a OP25 track. Automatic flip down front makes product loading simpler and quicker especially for high products and tight shelves. Used for perforated boxes.

Std Colour: Transparent
Std Width: 132,5 mm
Std Height: 34,7 mm
Std. Spring: 6; 9
Std Matr: Polycarbonate

OP25-FDF WIDE

Item	Colour	D	Spring	Spec.	No/unit
185848	Transp/grey S8	185-385	9	Assembled OP25B + front stop	10
185849				Front stop	10



Front stop, automatic flipdown, narrow
Mounted on a OP25 track. Automatic flip down front makes product loading simpler and quicker especially for high products and tight shelves. Used for perforated boxes.

Std Colour: Transparent
Std Width: 64,5 mm
Std Height: 34,7 mm
Std. Spring: 6; 9
Std Matr: Polycarbonate

OP25-FDF NARROW

Item	Colour	D	Spring	Front	Spec.	No/unit
185845	Transp/grey S8	185-385	9	FDF Narrow	Assembled OP25B + front stop	10
185846	Transp				Front stop	10



Pusher without track
With front clip, integrated product riser and spring. Without pusher track.

Std Colour: White, transparent
Std Width: 50 mm
Std Height: 70 mm
Std. Spring: 2; 3; 6

OP-SPC-KIT

Item	Spring	No/unit
395860	2	50
393623	3	50
397675	6	50
887764	9	50



Pusher without track
With front clip, integrated product riser and spring. Without pusher track. Std height 70, front height 40. Std width 50, front width 45.

Std Colour: White, transparent
Std Width: 50 mm
Std Height: 70 mm
Std. Spring: 2; 3; 6

OP-SPF-KIT

Item	H	Spring	No/unit
395859		2	50
393614		3	1
872740		9	50
397674		9	50
393625	40	2	50

Optimal™ Trays and Boxes



Pusher/gravity tray, non-breakable, for beverages
Beverage tray for sleek cans Ø 58 mm and same sized bottles.

Std Colour: Transparent with black pusher
Std Width: 60 mm
Std Depth: 360; 385; 435; 485; 500; 510; 560; 585 mm
Std Matr: PETG

OPT-TRAY BEV60

Item	Colour	W	D	Spec.	No/unit
599933	Transp/Black pusher	60	385	Gravity	22
598235	Transp/Black pusher	60	485	Gravity	22
598250	Transp/Black pusher	60	585	Gravity	24



Pusher/gravity tray, breakable, for beverages
Beverage tray for sleek cans Ø 58 mm and same sized bottles. Breakable each 50 mm.

Std Colour: Transparent
Std Width: 60 mm
Std Depth: 385-485; 485-585 mm
Std Matr: PETG

OPT-TRAY BEV60B

Item	Colour	W	D	Spring	Spec.	No/unit
599943	Transp	60	385-485		Gravity	22
599944	Transp/Black pusher	60	385-485	8N	Pusher	22



Pusher/gravity tray, non-breakable, for beverages
Beverage tray for 33 cl classic cans and bottles Ø 66 mm.

Std Colour: Transparent
Std Width: 68 mm
Std Depth: 360; 385; 400; 435; 485; 500; 560; 585 mm
Std Matr: PETG

OPT-TRAY BEV68

Item	Colour	W	D	Spring	Spec.	No/unit
854857	Transp	68	485		Gravity	24
854862	Transp	68	500		Gravity	24
854220	Transp	68	585		Gravity	24
599951	Transp/Black pusher	68	385	8N	Pusher	30
599954	Transp/Black pusher	68	485	8N	Pusher	24



Pusher tray, non-breakable, for beverages
Beverage tray for PET bottles Ø 94 mm.

Std Colour: Transparent front, black tray
Std Width: 96 mm
Std Depth: 400; 485; 590 mm

OPT-TRAY BEV96

Item	Colour	W	D	Spring	No/unit
186125	Black with transp. front	96	400	16N	16
184917	Black with transp. front	96	495	16N	14
186127	Black with transp. front	96	590	20N	10

Optimal™ Trays and Boxes



Pusher tray for chocolate bars. Non-breakable
Special double wall tray with integrated pusher adapted for chocolate tablets 90-94 mm wide. Internal width 95.5 mm.

Std Colour: Transparent; black; other colours available upon request, including custom print on the pusher house.
Std Width: 102 mm
Std Depth: 370 mm
Std Height: 142 mm
Std Matr: ABS

OPT-TRAY-CHOCO

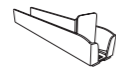
Item	Colour	W	D	Spring	No/unit
365326	Transparent	102	370	2	20

On offer, contact customer service

Pusher tray, non-breakable, for tobacco

Developed for cigarette packs. The different sizes cover the standard packs of cigarettes on the market.

Std Colour: Transparent tray, white pusher
Std Width: 30; 45; 57; 59; 74 mm
Std Depth: 185; 210; 235; 260; 270; 280; 285; 310; 360; 385; 410 mm
Std. Spring: 2; 3
Std Matr: Styrene



OPT-BOX TOBACCO

Item	Colour	W	D	Spring	No/unit
354212	Transp	59	285	3	2
355565	Transp	59	385	3	40



Pusher tray, breakable
Developed mainly with Personal Care and D-I-Y products in focus. One length available with two break points.

Std Colour: Transparent tray with white pusher
Std Width: 50; 52 mm
Std Depth: 385-485 mm
Std. Spring: 3; 6; 9
Std Matr: Polycarbonate

OPT-TRAY ROUND

Item	Colour	W	D	Spring	No/unit
851240	Transp	50	385-485	6	32
851241	Transp	50	385-485	9	32



Gravity tray, breakable, for spice jars
Gravity tray developed for spice jars. One length available with two break points.

Std Colour: Transparent
Std Width: 44; 46 mm
Std Depth: 385-485 mm

OPT-TRAY SPICES

Item	Colour	W	D	No/unit
386180	Transp	44	385-485	16



Gravity tray, babyfood
Gravity tray developed for babyfood jars.

Std Colour: Transparent
Std Width: 62 mm
Std Depth: 385; 400; 435; 485; 500; 535 mm
Std Matr: Polycarbonate

OPT-TRAY BABYFOOD

Item	Colour	W	D	No/unit
346973	Transp	62	385	32
346975	Transp	62	485	32
346976	Transp	62	535	32

Optimal™ Back Support



Back support plate, large
Used with OPRL and OPRL-PIN. Possible to add a sticker or a custom print. The Optimal™ adjustable back support solution used to keep irregularly shaped packaging (such as pre-packed or vacuum-packed products) standing straight.

Std Colour: Transparent
Std Width: 95 mm
Std Height: 150 mm
Std Matr: PET

OPRL

Item	W	H	No/unit
365326	95	150	20



Track for back support, large
Mounted on T-rail at the front. No fixation at the back. Used with OPRL and OPRL-PIN. The Optimal™ adjustable back support solution used to keep irregularly shaped packaging (such as pre-packed or vacuum-packed products) standing straight.

Std Colour: Transparent
Std Width: 90 mm
Std Depth: 384; 439; 483; 538; 582 mm
Std Matr: PET

OPSL

Item	Colour	W	D	No/unit
159260	Transp	90	384	20
159264	Transp	90	439	20
159262	Transp	90	483	20
159266	Transp	90	538	20
159265	Transp	90	582	20



Back support plate, small
To be used with track OPSS. The Optimal™ adjustable back support solution used to keep irregularly shaped packaging (such as pre-packed or vacuum-packed products) standing straight.

Std Colour: Transparent
Std Width: 65 mm
Std Height: 130 mm
Std Matr: PET

OPRS

Item	W	H	No/unit
387119	65	130	20



Track for back support, small
Mounted on T-rail at the front. No fixation at the back. Used with OPRS. The Optimal™ adjustable back support solution used to keep irregularly shaped packaging (such as pre-packed or vacuum-packed products) standing straight.

Std Colour: Transparent, frosted
Std Width: 55 mm
Std Depth: 285-485 mm
Std Matr: PET

OPSS

Item	W	D	No/unit
303295	55	485	20



Pull-strip, manual
For manual feed of the products from the front of the shelf. Used with OPRL and OPRL-PIN.

Std Colour: Transparent
Std Depth: 385; 435; 485; 535; 585 mm
Std Matr: Polypropylene

OPRL-PIN

Item	D	No/unit
159250	389	20
159251	444	20
159249	488	20
159252	543	20
159253	587	20



Magnetic back support
Freestanding back support, used to keep irregularly shaped packaging (such as pre-packed or vacuum-packed products) standing straight. Magnetic. Can be used with OPRL-PIN.

Std Colour: Transparent, Black
Std Width: 90 mm
Std Height: 135 mm
Std Mount: Magnet tape
Std Matr: PET

GBRN

Item	Colour	W	H	No/unit
397995	Transp	90	135	5
804648	Black	90	135	5



Large back plate for OP50B+
For larger pack sizes. Used with OP50+ pusher. Can be fixed into 20° and 90° angles. 20° angle can either be used on flat shelving for backward leaning pack presentation, or as a gravity pusher on angled shelving.

Std Colour: Grey S8
Std Width: 80 mm
Std Height: 130 mm
Std Matr: ABS

OSPA

Item	Colour	W	H	No/unit
857441	Grey S8	80	130	20



Back plate enlarger for OPRL
Support for larger products when using the back support system OPRL. Used with OPRL. The Optimal™ adjustable back support solution used to keep irregularly shaped packaging (such as pre-packed or vacuum-packed products) standing straight.

Std Colour: Transparent
Std Width: 117 mm
Std Height: 200 mm
Std Matr: Styrene

OTPL

Item	Colour	W	H	No/unit
300853	Transp	117	200	20

Shelf dividers

Optimal™ Back Support



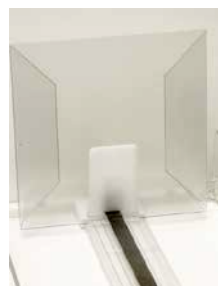
Pusher enlarger OP50
Used with OP50+ pusher. For larger pack sizes.

Std Colour: White
Std Width: 60; 105 mm
Std Height: 90; 148 mm
Std Matr: ABS



OSP

Item	Colour	W	H	No/unit
302399	White	60	90	20
858464	White	105	148	20



Back support with info holder
Re-size the pusher house and create a message holder. Custom made.

Std Colour: Transparent
Std Size: 100x100 mm



HDP

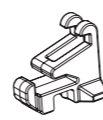
Item	Colour	W	H	No/unit
222418	Transp	100	100	40

Optimal™ Accessories



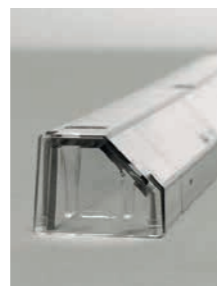
Connector clip
Mount the clip on the back of the divider, making possible to use an Optimal+ divider in an old divider installation. Can be used on an OPH or OPB rail.

Std Colour: Transparent
Std Matr: Polycarbonate



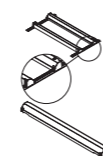
OPT+CLIP

Item	No/unit
874928	100



Divider for round products
For round packs. Use when the main display surface is on the top of the pack. Mounted on T-rail at the front.

Std Colour: Transparent
Std Depth: 285; 385; 485; 585 mm
Std Matr: Polycarbonate



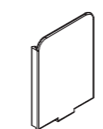
OCH

Item	Colour	D	No/unit
320287	Transp	385	20
320288	Transp	485	20



Message holder for OP50 pusher
Used on the sledge of OP50-PIN or OP50 pusher.

Std Colour: Transparent
Std Width: 42 mm
Std Height: 58 mm
Std Matr: Polycarbonate



OMHP

Item	Colour	W	H	No/unit
303605	Transp	42	58	20



Product raiser
Raises the first package in the lane for easier removal. Mounted onto the OP50 pusher.

Std Colour: Transparent, frosted
Std Width: 50 mm
Std Height: 8 mm
Std Matr: Polycarbonate



OP50-FL

Item	Colour	No/unit
324707	Transp	20



Slimline™



Choco trays

Maximise brand impact on shelf

Choco trays are specifically designed for presenting chocolate in the most effectful way. Thanks to the integrated pusher products are always front-faced without store staff having to pay continuous attention. Adaptable to different pack sizes and number of facings, choco trays are equipped with an angled backplate to maximise visibility and are customisable with branded communication and/or key benefits.

Key benefits:

- / Save time on shelf maintenance due to automated front-facing
- / Optimised product presentation
- / High brand impact



Choco trays



Pusher tray for chocolate bars. Non-breakable

Special double wall tray with integrated pusher adapted for chocolate tablets 90-94 mm wide. Internal width 95.5 mm.

Std Colour: Transparent; black; other colours available upon request, including custom print on the pusher house.
 Std Width: 102 mm
 Std Depth: 370 mm
 Std Height: 142 mm
 Std Matr: ABS

OPT-TRAY-CHOCO

On offer, contact customer service



Modulo

Flexible and adaptable front-facing, especially design for brands

The Modulo tray is an adaptable flip-front pusher tray system that can easily be adjusted to any number of facings, no matter the size of the shelf space. Products are always automatically front-faced, simplifying work for store employees.

Modulo is compatible with our shelfliners and a range of accessories for brand communication to make sure your brand stands out on shelf.

Key benefits:

- / Save time with automated front-facing
- / Highly flexible and adaptable depending on shelf space
- / High brand impact

Modulo



Modular Pusher Tray

One wall, breakable tray with integrated pusher (standard and slow motion) and flip front. Compatible with Brandline™ communication system and Optimal™.

Std Colour: Transparent
 Std Width: internal: 60 - 100 (increments of 2,5) mm
 Std Height: 84,5 mm
 Std Matr: Polycarbonate

MPT

On offer, contact customer service



Modular Pusher Tray Narrow

One wall, breakable tray with integrated pusher (standard and slow motion) and flip front. Compatible with Modulo, Brandline™ communication system and Optimal™.

Std Colour: Transparent
 Std Width: internal: 40 - 57,5 (increments of 2,5) mm
 Std Height: 84,6 mm
 Std Matr: PETG

MPTN

On offer, contact customer service



Sidewall for MPT

Sidewall used for the last MPT tray on the shelf.

Std Colour: Transparent
 Std Height: 84,5 mm
 Std Matr: Polycarbonate

MPT-DIV

On offer, contact customer service



Automated fronting

Multivo™

MU-DIV110LL-FDF-P25-.....	16
MU-DIV110LL-FDF-P25ext.....	16
MU-DIV110LL-FDF-P50-.....	17
MU-DIV110LR-FDF.....	17
MU-DIV110LR-FDF-P25-.....	17
MU-DIV110LR-FDF-P25ext.....	17
MU-DIV110LR-FDF-P50-.....	17
MU-DIV110TR-FDF-P25.....	17
MU-DIV110TR-FDF-P50.....	17
MU-DIV110TR-FDF-PS30.....	17
MU-DIV110TR-FDF-PS50.....	18
MU-DIV110TR-FDF-T-P25ext.....	18
MU-DIV65LL-FDF.....	18
MU-DIV65LL-FDF-P25.....	18
MU-DIV65LL-FDF-P25ext.....	18
MU-DIV65LL-FDF-P50-.....	18
MU-DIV65LL-LFDF-P50-.....	18
MU-DIV65LR-FDF.....	18
MU-DIV65LR-FDF-P25-.....	19
MU-DIV65LR-FDF-P25ext.....	19
MU-DIV65LR-FDF-P50-.....	19
MU-DIV65LR-LFDF.....	19
MU-DIV65TR-FDF-P25-.....	19
MU-DIV65TR-FDF-P50-.....	19
MU-DIV65TR-FDF-PS50.....	19
MU-DIV65TR-LFDF-P50-.....	19
MU-FRAIL.....	20,26
MU-GLIDE.....	21
MU-P25EXT.....	21
MU-RAIL.....	20,26
MU-RAIL ALU.....	20,26
MU-RAILW.....	20,26
MU-SLOPE.....	21
SMP40B-MU.....	20

Multivo™ Max

MU-CLIP.....	26
MU-FRAIL.....	20,26
MU-MAX CLIP.....	26
MU-MAX Metal SIDEWALL.....	25
MU-MAX Wire SIDEWALL.....	25
MU-MAX2 FRONT Angled (A6).....	24
MU-MAX2 FRONT Angled Mini (A4).....	24
MU-MAX2 FRONT Finger (F14).....	24
MU-MAX2 FRONT Finger Mini (F7).....	24
MU-MAX2 FRONT FLIP (FDW4).....	24
MU-MAX2 FRONT Flip down (FDF4).....	25
MU-MAX2 FRONT Straight (S6).....	24
MU-MAX2 FRONT Straight (S8).....	24
MU-MAX2 PUSHER P100.....	25
MU-MAX2 PUSHER P50.....	25
MU-MAX2 RUBBER GASKET.....	25
MU-MAX2-1M-P100.....	23
MU-MAX2-1M-P50.....	23
MU-MAX2-1W-P100.....	23
MU-MAX2-2M-P100.....	22
MU-MAX2-2M-P50.....	22
MU-MAX2-2P-P100.....	22
MU-MAX2-2W-P100.....	23
MU-MAX2-2W-P50.....	23

MU-MAX2-2WH-P100.....	23
MU-MAX2-LL-1W-P50.....	23
MU-MAX2-WDD.....	23
MU-MAXRAIL.....	26
MU-RAIL.....	20,26
MU-RAIL ALU.....	20,26
MU-RAILW.....	20,26

Next™

CB-WP-XL.....	30
WP Spring.....	32
WP-AVD-Ext.....	30
WP-BAR-Eur.....	30
WP-REAR for ESL.....	32
WP3 AVD-M.....	30
WP3 AVD-MH.....	30
WP3 F2.....	31
WP3 F3.....	31
WP3 F6.....	31
WP3 House.....	31
WP3CB-M.....	28
WP3CB-MH.....	28
WP3CB-W.....	29
WP3CB-WS.....	29
WP5 AVD-M.....	30
WP5 AVD-MH.....	30
WP5 F2.....	31
WP5 F3.....	31
WP5 F3,5.....	31
WP5 F6.....	31
WP5 House.....	32
WP5-AVD-PL.....	32
WP5CB-M.....	29
WP5CB-MH.....	29
WP5CB-PL.....	29
WP5CB-W.....	29
WP5CB-WS.....	29
WPAB.....	30

Roller Track™ & GlideTrack™

GT-Sheet.....	37
GTDO.....	37
GTSO.....	37
OPT-FR Slidable.....	36
RT-A4S.....	36
RT-AA.....	36
RT-AA80.....	36
RT-AP37.....	37
RT-AVD.....	35
RT-AVD WIRE.....	35
RT-AVD WIRE-T.....	35
RT-AVD-DS-L.....	35
RT-AVD-DS-T.....	36
RT-HL SHEET.....	34
RT-HL SHEET P.....	34
RTDO CN.....	35
RTDO-PLATE.....	35
RTF.....	36
RTSO CN.....	35
RTSO-PLATE.....	35
RTZ-CLIP.....	37
RTZ80-P2.....	36
RTZ80-P3.....	36

Automated fronting

Rotating shelves

MD BS.....	40
RS2MD Bracket MID.....	39
RS2MD Bracket TB.....	39
RS2MD FA1250/2.....	38
RS2MD FA1875/3.....	38
RS2MD FS.....	39
RS2MD SK.....	39
TL2MD Bracket TB.....	40
TL2MD FA.....	40
TL2MD FS.....	40
TL2MD Kits.....	40
TL2MD SK.....	40

Manual fronting

Facer™

FAC25.....	43
FAC26R.....	43
FACER-BACK CLIP.....	43
FACER-END.....	43
FACER-FRAME.....	42
FACER-XL.....	42

Shelf dividers

Optimal™

GBRN.....	53
HDP.....	54
OBR+.....	47
OBR+ OW3.0.....	47
OBR+T.....	47
OBRW+.....	47
OCH.....	54
OFR.....	49
OFRK.....	48
OFRK-OW3.0.....	49
OFRK80A.....	48
OFRKB3.....	48
OMHP.....	54
OP-SPC-KIT.....	51
OP-SPF-KIT.....	51
OP25-FDF Narrow.....	51
OP25-FDF Wide.....	51
OP25B+.....	50
OP25B+ CLIP.....	50
OP50-FDF.....	49
OP50-FL.....	54
OP50-FLF.....	49
OP50-FLF20.....	49
OP50-PIN.....	50
OP50B+ CLIP.....	50
OP50B-STOP-MINI.....	50
OP50SB+.....	50
OPB.....	47
OPH.....	47
OPH-OW3.0.....	47
OPHW.....	47
OPRL.....	53

OPRL-PIN.....	53
OPRS.....	53
OPSL.....	53
OPSS.....	53
OPT+CLIP.....	54
OPT-AVD120B+.....	45
OPT-AVD120BL+.....	46
OPT-AVD120BL12+.....	46
OPT-AVD120BT+.....	46
OPT-AVD120BT12+.....	46
OPT-AVD120BT3+.....	46
OPT-AVD200+.....	46
OPT-AVD200T+.....	46
OPT-AVD25B+.....	44
OPT-AVD35RBA.....	44
OPT-AVD35RBLA.....	45
OPT-AVD35RBTA.....	45
OPT-AVD60B+.....	45
OPT-AVD60BL+.....	45
OPT-AVD60BT+.....	45
OPT-AVD60BT3+.....	45
OPT-AVD60SB+.....	45
OPT-BOX TOBACCO.....	52
OPT-FR.....	48
OPT-TRAY BABYFOOD.....	52
OPT-TRAY BEV60.....	51
OPT-TRAY BEV60B.....	51
OPT-TRAY BEV68.....	51
OPT-TRAY BEV96.....	51
OPT-TRAY-CHOCO.....	52,56
OPT-TRAY ROUND.....	52
OPT-TRAY SPICES.....	52
OSP.....	54
OSPA.....	53
OTEF.....	48
OTEF40.....	49
OTPL.....	53
SMP40 CLIP.....	50
SMP40B-OPT.....	50

Shelf trays

Choco tray

OPT-TRAY-CHOCO.....	52,56
---------------------	-------

Modulo

MPT.....	57
MPT-DIV.....	57
MPTN.....	57



Helping customers to create more sustainable stores

It's time to get serious! For consumers, sustainability has become an important purchasing criterion. For retailers and brand suppliers, operating sustainably is no longer a choice but an expectation. Governments are taking more measures and passing legislation in the retail sector.

HL has a track record of sustainable development, dedicating efforts in research and innovation to deliver more sustainable solutions and help create more sustainable stores.

The HL Sustainability Choice range is expanding continuously, with merchandising solutions to assist retailers in strengthening their sustainability credentials, creating differentiation, and gaining shopper loyalty.

Head office

HL Display AB
Box 1118, Cylindervägen 18,
131 26 Nacka Strand - Sweden
Tel. +46 8 683 73 00
info@hl-display.com
www.hl-display.com

Subsidiaries

ASIA & AUSTRALIA

AUSTRALIA & NEW ZEALAND
HL Display Australia Pty Ltd.
Suite 432, Level 4,
14 Lexington Drive
Norwest Business Park
Bella Vista NSW 2153
Australia
Phone: +61 2 8883 1158
E-mail: info.au@hl-display.com

CHINA
Foshan Yongli Display Co. Ltd.
Flat1118, 11/F, Huihang Center
Jiahui New City, No. 3027
Shennan Mid Road
Futian District, Shenzhen
China
Phone: +86 755 83299379
E-mail: jay.yao@yhc-display.com

HONG KONG
HL Display Hong Kong Ltd.
Unit 1216, 12th Floor,
New Commerce Centre
19 On Sum Street, Siu Lek Yuen
Shatin, New Territories
Hong Kong
Phone: +852 2646 8611
E-mail: info.asia@hl-display.com

INDIA
Handel Linc Display Solutions Pvt. Ltd.
16th Floor, Lodha Supremus,
Opposit MTNL, Off JVLRL,
Saki Vihar Road
Powai, Mumbai, India – 400072
Phone: +91 96531 38247
E-mail: sales.in@handel-linc.com

INDONESIA
PT. Indo Ritel Lin
L'Avenue Office Tower 12th Fl,
Suite 12A Jl. Raya Pasar Minggu
Kav. 16
Jakarta Selatan 12780, Indonesia
Phone: +6221 8066 7280
E-mail: sales.id@handel-linc.com

KOREA
HLK
5th Floor, 8 Macheon-ro
Songpa-gu, Seoul
Republic of Korea
Phone: +82 2 2659 2657
E-mail: sales@hlk.co.kr

MALAYSIA
Handel Linc Display Sdn Bhd.
12A, Jalan PUJ 3/41,
Sunway Damansara Technology Park
47810 Petaling Jaya,
Selangor
Malaysia
Phone: +603 7803 2690
E-mail: sales.my@handel-linc.com

PHILIPPINES
Handel Linc Display, Inc.
No. 7 Pioneer corner Sheridan Streets,
Mandaluyong City 1550
Metro Manila
Philippines
Phone: +63 91 7594 0290
E-mail: sales.ph@handel-linc.com

SINGAPORE
Handel Linc Display Pte Ltd.
52 Ubi Avenue 3
#04-46, Frontier,
Singapore 408867
Phone: +65 6396 00 96
E-mail: sales.sg@handel-linc.com
TAIWAN
iCreate Display Co Ltd.
Rm. 9, 9F., No. 27. Sec. 2,
Zhongzheng E. Red.,
Tamsui Dist.
New Taipei City 251
Taiwan
Phone: +886 2 8809 8890
E-mail: icr@create-tw.com

THAILAND
HL Display (Thailand) Ltd.
399 Interchange Building
21st Floor, Unit no.2108
Sukhumvit Road, Klongtoey-Nua
Wattana, Bangkok
Thailand 10110
Phone: +66 2258 4472 5
E-mail: info.thailand@hl-display.com

VIETNAM
Handel Linc Display Pte Ltd.
52 Ubi Avenue 3,
#04-46, Frontier,
Singapore 408867
Phone: +65 6396 0096
E-mail: sales.vn@handel-linc.com

EUROPE

AUSTRIA
HL Display Österreich GmbH.
Mosetiggasse 1A
1230 Wien
Austria
Phone: +43 1 667 02 90
E-mail: info.at@hl-display.com

BELGIUM
HL Display Belgium N.V.
Emmastraat 2C,
4811 AG Breda,
The Netherlands
Phone: +32 3 457 88 77
E-mail: info.be@hl-display.com

BULGARIA
Display Bulgaria Ltd.
2E, Ivan Geshov bulv.
Business Center Serdika
Building 3, floor 2, office 214
BG-1330 Sofia
Bulgaria
Phone: +359 2 421 08 36
E-mail: info@display-bulgaria.com

CZECH REPUBLIC
HL Display Česká republika s.r.o.
Zelený Pruh 95/97
140 00 Praha 4
Czech Republic
Phone: +420 606 740 449
E-mail: info.cz@hl-display.com

DENMARK
pr trading a/s
Måløv Værkstedby 1
2760 Måløv
Denmark
Phone: +45 44 95 33 22
E-mail: info@pr-trading.dk

ESTONIA
Meediagrupi OÜ
Liimi 6/2 box 8
106 21 Tallinn
Estonia
Phone: +372 610 4045
E-mail: info@meediagrupi.ee

FINLAND
HL Display Suomi OY
Metsänneidonkuja 6
Duo-talo
02130 Espoo
Finland
Phone: +358 09 562 9180
E-mail: info.fi@hl-display.com

FRANCE
HL Display France S.A.S.
20 rue de la Milletière
37100 Tours
France
Phone: +33 2 47 48 85 00
E-mail: info.fr@hl-display.com

GERMANY
HL Display Deutschland GmbH
Rudolf-Wanzl-Straße 13-15
89340 Leipheim
Germany
Phone: +49 8221 2798-0
E-mail: info.de@hl-display.com

Oechsle Display Systeme GmbH
Rudolf-Wanzl-Straße 13-15
89340 Leipheim
Germany
Phone: +49 8221 2798-0
E-mail: info@oechsle.de

werba print & display GmbH
Am Froschbächle 23
77815 Bühl (Baden)
Germany
Phone: +49 (0) 7223 / 9864 - 0
E-mail: info@werba-print.de

GREECE
Voyatzoglou S.A.
12 Km Nat. Road
Athens-Lamia
144 51 Metamorfoosi, Athens
Greece
Phone: +30 210 28 88 600
E-mail: info@voyatzoglou.gr

HUNGARY
HL Display Österreich GmbH.
Mosetiggasse 1A
1230 Wien
Austria
Phone: +43 1 667 02 90
E-mail: info.hu@hl-display.com

ICELAND
Rými Ofnasmíðjan
Gylfatot 4
Reykjavík 112
Iceland
Phone: +354 511 11 00
E-mail: rymi@rymi.is

ITALY
HL Display Italia
Via Del Chionso 24/1
42122 Reggio Emilia
Italy
Phone: +39 0 522 51 12 36
E-mail: info.it@hl-display.com

IRELAND
Allied POS / HL Display Ireland
Block 14G, Beechwood Buildings,
Greenogue Business Park,
Rathcoole, Dublin 24.
Eircode – D24 PD90
Phone: +353 1 458 7470
E-mail: salesireland@hl-display.com

LATVIA
Display Latvia SIA
Jelgavas ceļš 20, Tīraine
Mārupes novads, LV-2167
Latvia
Phone: +371 67819999
E-mail: info@displaylatvia.com

LITHUANIA
Display Lithuania UAB
Metalo g. 10, kab. 4
Vilnius LT-02190
Lithuania
Phone: +370 52602074
E-mail: info@displaylithuania.com

MALTA
VJ Salomone Consumer Lines Ltd.
79 Simpson Street
Marsa MRS1606
Malta
Phone: (+356) 2298 3206
E-mail: consumer@vjsalomone.com

NETHERLANDS
HL Display Nederland B.V.
Emmastraat 2C
4811 AG Breda
The Netherlands
Phone: +31 164 66 26 60
E-mail: info.nl@hl-display.com

NORWAY
HL Display Norge A/S
Nye Våkås Vei 8C
1395 Hvalstad
Norway
Phone: +47 66 98 36 00
E-mail: info.no@hl-display.com

POLAND
HL Display Polska Sp.z.o.o.
ul Nakielska 3
01 - 106 Warszawa
Poland
Phone: +48 (22) 877 62 00
E-mail: info.pl@hl-display.com

PORTUGAL
Michael Folke Wiberg, Imp. e Exp., Lda
Rua Fonte do Casal, nº 38, Brenha
3080-440 Figueira da Foz
Portugal
Phone: +351 233 436 381
E-mail: info@mfw.pt

ROMANIA
HL Display SRL
Tudor Vladimirescu Boulevard,
number 22
Green Gate Office Building, 5th floor,
office 535
050883 Bucharest, 5th district
Romania
Phone: +40 21 319 48 11
E-mail: info.ro@hl-display.com

SERBIA
Square Display
Spanskih Boraca 22B
11070 Novi Beograd
Serbia
Phone: +381 (11) 3131 281

SLOVAKIA
HL Display Slovensko, s.r.o.
Černyševského 10
851 01 Bratislava
Slovakia
Phone: +421 911 447 474
+421 908 730 555
E-mail: info.sk@hl-display.com

SLOVENIA
HL Display Ljubljana d.o.o.
Letališka cesta 29
1000 Ljubljana
Slovenia
Phone: +386 51 311 558
E-mail: info.si@hl-display.com

SPAIN
HL Display Spanien S.L.
Calle Cronos, 20 Bloque 2 Piso 1º
Oficina 3
28037 Madrid
Spain
Phone: +34 639 205 239
E-mail: info.es@hl-display.com

SWEDEN
HL Display Sverige AB
Cylindervägen 18
131 52 Nacka Strand
Sweden
Phone: +46 8 683 73 63
E-mail: info.se@hl-display.com

Akriform Plast AB
Bergkällavägen 38
192 79 Sollentuna
Sweden
Phone: +46 8 625 99 00
E-mail: info@akriform.se

SWITZERLAND
HL Display Schweiz AG
Neumattstrasse 17
5000 Aarau
Switzerland
Phone: +41 62 834 50 30
E-mail: info.ch@hl-display.com

TURKEY
HMK Satis Destekleme Urunleri A.S
Ambarlidere Sk. No:6
K:-1 34347 Ortakoy Besiktas
Istanbul
Turkey
Phone: +90 212 233 94 65
E-mail: info@hmkas.com

UKRAINE
Display Ukraine LLC
Block 3, 5 Syretska St.
04073 Kyiv
Ukraine
Phone: +38 044 222 9100
E-mail: info@d-u.com.ua

UNITED KINGDOM
HL Display (UK) Ltd.
Horsecroft Road, The Pinnacles
Harlow, Essex, CM19 5BH
United Kingdom
Phone: +44 1279 41 23 45
E-mail: info.uk@hl-display.com

MIDDLE EAST & AFRICA

ISRAEL - VISUAL MIND
Visual Mind
9 Efroni Street
3079709 Caesarea
Israel
Phone: +972-54-6622115
E-mail: ori@visualmind.co.il

MOROCCO
Silver city SARL
48 Rahel Ben hmed,
Belvedere, Casablanca
Morocco 203001
Morocco
Phone: +212 522 409 344
E-mail: contact@rayonnagepro.com

SOUTH AFRICA
KYTA Industries (Pty) Ltd.
22 Harris Drive
Sunset Industrial Park
Ottery 7800, Cape Town
South Africa
Phone: +27 21 703 4657
E-mail: michael@kytaindustries.com

UNITED ARAB EMIRATES
HL Display Middle East DMCC
Box 309143
Jumeirah Lake Towers
Fortune Tower, C1
Dubai UAE
Phone: +971 4 424 0110
E-mail: info.ae@hl-display.com

NORTH AMERICA

USA
Retail Bulk Solutions
475 N Cleary Rd Unit 4
West Palm Beach, FL 33413
United States
Phone: +1 561 567 9000
E-mail: retailbulkinfo@gmail.com

USA
Siffron
8181 Darrow Rd
Twinsburg, OH 44087
United States
Phone: +1 (330) 998-7800
E-mail: info@siffron.com

SOUTH AMERICA

BRAZIL
Neogranel
Rod. Darly Santos, 2025 08F
Vila Velha, ES, 29110-340
Brazil
Phone: +55 27 3149 0600
E-mail: contato@neogranel.com.br

MEXICO
OM Visual Merchandising
Siporex #2
53370, Estado de Mexico
Mexico
Phone: +01 55 5207 9116
E-mail: comercial@grupo-om.mx

Also covering Peru, Chile, Ecuador, Colombia, Uruguay and Argentina.



The better shopping experience

HL DISPLAY AB

Box 1118, Cylindervägen 18,
131 26 Nacka Strand - Sweden

Tel. +46 8 683 73 00

info@hl-display.com
www.hl-display.com